



GP



# FIRST ANNUAL BULL SALE

SELLING 70 PUREBRED, REGISTERED BLACK ANGUS BULLS

**FRIDAY, MARCH 8, 2024 • 1 PM**

**SHB Sale Barn, Reardan, Washington**

*just west of Spokane*





# WELCOME

## FRIENDS & FELLOW CATTLEMEN TO THE



# FIRST ANNUAL BULL SALE

### Hello fellow cattlemen!

As some of you know, SHB Angus has a new sale barn at its ranch in Reardan, WA, and this will be the first sale to be held in that brand new facility. It is conveniently located just off N. Wood Rd. by their new feed lot where the bulls are living. All sale bulls are purebred Black Angus registered by the American Angus Association. We will follow a video-only format, but the sale bulls are physically present right there for viewing on sale day and presently at the SHB sale facility. Come join us at this inaugural sale!

While this is the first annual joint sale for SHB Angus and Gardiner Prime Angus Ranch it is not the first sale we have held together. As many of you know, we were partners together for the past three years in the now discontinued Rancher's Choice sale with the Alexander's Hang'n A Cattle Company. Going back even further we've fed cattle together, sold cattle to each other, and been good friends for a long time. We are pleased to present our respective top breeding bulls jointly at this first SHB/GPAR sale.

Another value we have in common is a strong commitment to making sure that our customers are happy with our bulls. Treating our customers the way we would want to be treated is something that we strongly believe in. As you study the data you can be assured that you can buy with confidence because this commitment is something you can count on.

Come early and view the bulls and join us for lunch prior to the sale. Lunch will be served at noon with the sale starting at 1:00. DVAuction will also be there to broadcast the sale live on-line. Videos of the bulls will be available approximately two weeks before the sale on the DVAuction website, also at SHBangus.com and GardinerPrimeAngus.com. Come visit on line or at our respective ranches and call us any time to talk cattle!

Thank you for taking the time to look at this catalog and for your friendship and support. We are extremely grateful for our customers old and new that have continued to show support for our programs. We look forward to visiting with you on sale day!



### SHB ANGUS

Reardan, WA  
Ed Gross, Manager 509-979-9233  
Eli Gross 509 434-6244  
[www.SHBanguscattle.com](http://www.SHBanguscattle.com)



### GARDINER PRIME ANGUS RANCH

Bonniers Ferry, ID  
Pat & Ada Gardiner 208-290-4521  
Glenn Ensz, Herdsman 208-597-0617





# SHB ANGUS & GARDINER PRIME ANGUS RANCH FIRST ANNUAL BULL SALE

**FRIDAY, MARCH 8, 2024**

SHB Angus Sale Barn • Reardan, Washington *just west of Spokane*  
1323 N. Wood Rd., Reardan, WA 99029

**LUNCH AT 12 PM :: SALE AT 1 PM**

## SALE DAY PHONES:

Ed Gross.....(509) 979-9233  
Eli Gross.....(509) 434-6244  
Pat Gardiner.....(208) 290-4521  
Glenn Ensz.....(208) 597-0617

## DRIVING DIRECTIONS:

From Ritzville -- I-90 E toward Spokane. Go for 43.6 mi. Take Exit 264 toward WA-902 E/Cheney/Medical Lake. Go for .3 mi. Turn Left onto W. Salnave Rd (WA-902.) Go for 4.3 mi. Continue on WA-902. Go for .9 mi. Continue on S. Lefevre St. (WA-902.) Go for 1.5 mi. Turn Left onto W. Brooks Rd. Go for 4.8 mi. Turn Left onto W. Highway 2 (US-2.) Go for 2.0 mi. Turn right onto Wood Rd. Go 1.8 mi on Wood Rd. to sale barn on left.

From Spokane -- I-90 W to Spokane Airport/Davenport onto US-2 W. Go for 3.9 mi. Pass 2 roundabouts and continue on US-2 W. Go for 4.4 mi. Continue toward W. Highway 2/US-2. Go for 144 ft. Continue on W. Highway 2 (US-2). Go for 4.2 mi. Turn right onto Wood Rd. Go for another 1.8 mi. to sale barn on left.

## LUNCH:

Complimentary lunch served at 12:00 p.m. in the sale facility.  
Refreshments will be available sale morning and throughout the day.

## AUCTIONEER:

Butch Booker, Colfax, WA..... (509) 989-2855

## SALE DAY REPRESENTATIVES:

Quanah Gardiner, American Angus Assn .....(620) 635-0294  
Rod Wesselman, Wesselman Livestock ..... (509) 750-2185  
Jake Pickering, Western Ag Reporter ..... (530) 415-5484  
Mark Frisbie, Special Assignment..... (208) 495-2601

The sale hosts or one of the sale representatives listed above will be available to provide feedback on the lots and handle phone bids during the sale.

## HEALTH & FERTILITY:

Health certificates will be issued to all out of state buyers on sale day if bulls are loaded out that weekend. All bulls, regardless of age, have passed a semen test. Trich tests will be done as required to meet import regulations of the destination states.

## WARRANTY:

All sale bulls are purebred Angus registered with the American Angus Association, and will sell according to the American Angus Association terms and conditions. All bulls are guaranteed against injury or death for the first breeding season. The seller will work with the buyer and either (1) replace the bull with a comparable animal if one is available or (2) credit the buyer with the purchase price, less salvage, at the next sale. All claims must be made in the same year the bull was originally purchased.

## LIVESTOCK INSURANCE:

Buyers assume all risk upon purchase and are encouraged to purchase insurance at the settlement desk. Insurance information will be available on sale day.

## SUPPLEMENT SHEETS:

Scrotal measurements, lots out of the sale, additional performance data and ultrasound measurements will be available on sale day.

## DELIVERY:

We encourage everyone to bring their trailer and take advantage of the \$50 per bull haul out credit. Bulls must be picked up after the sale or by appointment Saturday to qualify.

We plan to deliver bulls for free to central locations in Washington and adjacent states starting on or before April 1st unless you need your bull(s) quicker.

If you wish to leave your bulls longer, please make arrangements directly with the individual partner(s) at time of settlement on sale day. If you purchase your bull(s) online or via a phone bid, we will contact you after the sale for delivery information.

## TERMS AND CONDITIONS:

All settlements must be made with the clerk immediately following the conclusion of the sale. Terms of the sale shall be cash or bankable checks unless prior arrangements have been made in advance. Internet buyers will be invoiced. All supplements to the sale book or announcements made from the block take precedence over what is written in the sale book. Registration certificates will be transferred on all eligible animals.

## INSPECTION OF CATTLE:

The bulls are on feed at the SHB Feedlot, 1323 N. Wood Rd., Reardan, WA, outside of Spokane just past Airway Heights, and may be inspected any time during the work day.

Please bring your sale book with you to the sale. Videos of the sale lots will be posted to [www.DVAuction.com](http://www.DVAuction.com) as they become available.

## INTERNET BIDDING:

**DVAuction**

If you are unable to attend the sale for any reason, you can view the sale live and bid on lots via the [www.DVAuction.com](http://www.DVAuction.com) website. Lot videos will be available for viewing in advance and during the sale. Internet buyers must create an account and request a buyer number prior to sale day (no charge.) If you choose to use this service visit [www.dvauction.com](http://www.dvauction.com) or contact Heather Soukup at 402-681-0577 for more information and support.

## LIABILITY:

All persons attending the sale and related functions do so at their own risk. SHB Angus and Gardiner Prime Angus Ranch, their staff or representatives assume no liability, legal or otherwise, for any accidents or injuries that may occur.

## 2024 SALE CO-HOSTS:

**Ed Gross** (509) 979-9233 :: **Eli Gross** (509) 434-6244  
SHB Angus :: Reardan, Washington

**Pat & Ada Gardiner** (208) 290-4522 :: **Glenn Ensz**, Herdsman (208) 597-0617  
Gardiner Prime Angus Ranch :: Bonner's Ferry, Idaho

## AREA HOTELS:

Hilton Garden Inn :: (509) 266-5866  
9015 W. Highway 2, Spokane WA 99224

Days Inn & Suites :: (509) 850-9413 (2-Star hotel)  
1215 S. Garfield Rd., Airway Heights, WA 99001

Stratford Suites Spokane Airport :: *next to the Days Inn and Suites*



# SHB ANGUS

Ed Gross, Manager 509-979-9233  
 Eli Gross 509 434-6244  
 3610 N Wood Rd :: Reardan, Washington 99029  
 shbangus@gmail.com :: www.SHBanguscattle.com

Dear fellow Cattlemen.

We would like to welcome you to our first annual spring performance bull sale at the Ranch. We are excited to be hosting our own sale this year as we turn the page to a new and exciting chapter for SHB Angus. We are extremely grateful for all of the supportive partners that we have been affiliated with in the last sales and ventures along with all of our customers and friends that have supported us and made us who we are through the years.

As we are right in the middle of calving season now, we are reminded once again of the importance of the best maternal traits in a cow herd. Our focus has always been on the development of a cow herd that is productive in real world conditions to help the cattleman.

We at SHB have the unique opportunity of being involved in all of the phases of cattle production. From a seed stock to a commercial cow calf operation as well as a grower and a finish feed yard we get to see firsthand the importance of genetic selection. Our confidence in our genetics is a direct reflection of our desire to buy back SHB sired calves due to their performance in the feedlot.

The offering of bulls we have is a direct result of 25 years of carefully selecting the genetics combined with real world performance. The bulls are fed high roughage ration after weaning to promote durability and longevity of the bulls. Our bulls are carefully selected to produce the best genetics not only for our operation but for your operation and the entire beef industry.

Our ranch is always open for anybody that would like to see the offering of bulls we have and the cowherd responsible for producing it. Thank you again for all of the friendships we have made through the years and all of the new ones to come.

God bless and we look forward to many more years of serving you.

*Ed Gross, SHB Angus*



## SPRING 2024 ANGUS NON-PARENT BULL EPD & \$VALUE BREED AVERAGES

Calving Ease	Birth Weight	Weaning Weight	Yearling Weight	Daughters	Hot Carcass Weight	IMF	Ribeye	Fat	Weaned Calf Value	Feedlot Value	Grid Value	Beef Value
CED	BW	WW	YW	MILK	CW	MARB	RE	FAT	\$W	\$F	\$G	\$B
6	1.2	63	112	27	50	0.69	0.65	0.013	59	88	53	144



## REFERENCE

**A****BALDRIDGE VERSATILE**

Birth Date: 4/24/2019

AAA 19563587

HD50K



G A R PROPHET  
BALDRIDGE FORECASTER B160  
AAA 18203854

BALDRIDGE PRATISSA W165

HOOVER DAM  
BALDRIDGE BLACKBIRD A030  
AAA 17770899

BALDRIDGE BLACKBIRD X89

C R A BEXTOR 872 5205 608  
G A R OBJECTIVE 1885

GAR-EGI PROTEGE  
BALDRIDGE PRATISSA S4  
SYDGEN C C & 7  
ERICA OF ELLSTON C124

STYLES UPGRADE J59  
BALDRIDGE BLACKBIRD P160

CED	BW	WW	YW	MILK	CW	MARB	RE	FAT
8	0.9	74	136	14	47	1.85	0.29	0.012

\$W	\$F	\$G	\$B
55	89	110	199

We bought into the Baldridge Versatile bull when he sold for \$250,000 in 2021, joining a syndicate of Angus breeders. He has proven to be a good investment, with his now progeny proven EPD's showing him to be a calving ease bull with strong growth, great Heifer Pregnancy, and breed-leading Docility and Marbling, ranking in the top 1% for both traits. As an added bonus, possibly his best attribute will be the females he sires, with his first calved daughters impressing all who've used him with their gentle natures, and with their perfect, well attached udders, with small teats.



BALDRIDGE VERSATILE :: SIRE OF LOTS 1-14

## REFERENCE

**B****VERMILION BOMBER G017**

Birth Date: 1/30/2019

AAA 19498421

ANGUS GS

KM BROKEN BOW 002  
CASINO BOMBER N33  
AAA 18658677

CASINO ANNIE K48

SITZ JLS GAME DAY 9630  
VERMILION EDWINA 7078  
AAA 18833011

VERMILION EDWINA 52979

SUMMITCREST COMPLETE 1P55  
SUMMITCREST PRINCESS 0P12

DPL UPWARD L70  
CASINO ANNIE G64  
GDAR GAME DAY 449  
JLS BARBARAMERE NELL 2238

S A V PRIVILEGE 3030  
VERMILION EDWINA 1514

CED	BW	WW	YW	MILK	CW	MARB	RE	FAT
7	0.4	89	145	12	75	0.46	0.81	0.029

\$W	\$F	\$G	\$B
73	120	44	164

G017 has been working extremely well for the breeders who've used him, adding more growth and more muscle than his popular sire.



VERMILION BOMBER G017 :: SIRE OF LOTS 15-21

## REFERENCE

**C****U2 OZARK 474G**

Birth Date: 2/13/2019

AAA 19840924

HD50K

COLEMAN CHARLO 0256  
COLEMAN BRAVO 6313  
18734838

COLEMAN DONNA 714

YOUNG DALE XCLUSIVE 25X  
U2 ERELITE 109Z  
19627845

U-2 ERELITE 1X

O C C PAXTON 730P  
BOHI ABIGALE 6014

CONNELLY ONWARD  
COLEMAN DONNA 386  
YOUNG DALE KNOCK OUT T34U  
YOUNG DALE POLLYANNA 60T

S A V FINAL ANSWER 0035  
U-2 ERELITE 8109U

CED	BW	WW	YW	MILK	CW	MARB	RE	FAT
11	0.1	58	104	29	31	-0.10	0.35	0.005

\$W	\$F	\$G	\$B
66	69	11	80

Ozark's famous and high-selling dam, Erelite 109Z, is best known as the dam of the popular U-2 Coalition. He's been doing a great job for us, we like the eye-appeal and muscle evident in his sons.



U2 OZARK 474G :: SIRE OF LOTS 35-39





LOT 1



LOT 2

LOT 3

## SHB VERSATILE 93L

Birth Date: 01/16/23

AAA 20867199

ANGUS<sup>SS</sup>

BALDRIDGE  
VERSATILE  
AAA 19563587

BALDRIDGE FORECASTER B160  
BALDRIDGE PRATISSA W165  
BALDRIDGE BLACKBIRD A030

SHB PENDLETON 9201  
SHB COLEMAN LUCY C248  
AAA 18356669

HOOVER DAM  
BALDRIDGE BLACKBIRD X89  
HARB PENDLETON 765 J H  
S H B 837 RITA 3136  
R R RITO 707  
DB LUCY 163

BW	80
AWW	771
RATIO	109
AYW	1337
RATIO	108

CED	BW	WW	YW	MILK	CW	MARB	RE	FAT
5	0.0	68	119	30	57	0.78	0.32	0.052

Another high-scanning Versatile, out of a 9201 daughter, making for a nice blend of performance, carcass, and maternal. One of our heaviest at weaning, with a 109 ratio.

\$W	\$F	\$G	\$B
70	88	52	140

LOT 1

## SHB VERSATILE 79L

Birth Date: 01/16/23

AAA 20867214

ANGUS<sup>SS</sup>

BALDRIDGE  
VERSATILE  
AAA 19563587

BALDRIDGE FORECASTER B160  
BALDRIDGE PRATISSA W165  
BALDRIDGE BLACKBIRD A030

SHB LUCY F425  
AAA 19471892

CONNEALY COMMONWEALTH  
HARB PENDLETON 765 J H  
COLEMAN LUCY 980

BW	87
AWW	695
RATIO	99
AYW	1305
RATIO	106

CED	BW	WW	YW	MILK	CW	MARB	RE	FAT
0	3.7	86	147	28	61	0.71	0.42	0.008

One of our favorites, there's big-time growth in this Versatile son, and like his brothers, he's strong for Marbling as well! Also ranks in the top 1% for Docility.

\$W	\$F	\$G	\$B
71	98	53	151

LOT 2

## SHB VERSATILE 56L

Birth Date: 01/17/23

AAA 20867204

ANGUS<sup>SS</sup>

BALDRIDGE  
VERSATILE  
AAA 19563587

BALDRIDGE FORECASTER B160  
BALDRIDGE PRATISSA W165  
BALDRIDGE BLACKBIRD A030

VDAR ELLUNA 6459  
AAA 18409641

V D A R CHURCHILL 1063  
DFA HERO 6017  
V D A R FOREVER LADY 1409  
SINCLAIR NET PRESENT VALUE  
VDAR ELLUNA 1362

BW	80
AWW	763
RATIO	108
AYW	1296
RATIO	105

CED	BW	WW	YW	MILK	CW	MARB	RE	FAT
9	1.8	78	138	30	48	1.56	0.43	0.019

High growth, Marbling, and Docility (top 1%) in this top-scanning Versatile son, who posted an amazing IMF scan ratio of 181! Aligns with his top 2% ranking for both his genomic Marbling score and his Marbling EPD! High for Heifer Pregnancy as well.

\$W	\$F	\$G	\$B
75	74	96	170

LOT 4

## SHB VERSATILE 35L

Birth Date: 01/25/23

AAA 20867210

ANGUS<sup>SS</sup>

BALDRIDGE  
VERSATILE  
AAA 19563587

BALDRIDGE FORECASTER B160  
BALDRIDGE PRATISSA W165  
BALDRIDGE BLACKBIRD A030

SHB ENTENSE E367  
AAA 18993690

CONNEALY COURAGE 25L  
CONNEALY CONFIDENCE 0100  
PEARL PAMMY OF CONANGA 194  
SITZ ALLIANCE 6595  
BT EVERELDA ENTENSE 613L

BW	90
AWW	707
RATIO	100
AYW	1286
RATIO	105

CED	BW	WW	YW	MILK	CW	MARB	RE	FAT
7	2.0	67	116	22	43	0.97	0.37	0.001

A well balanced EPD package on this bull, ranking high for Marbling as you'd expect with Versatile as his sire. He posted a 155 scan ratio for Marbling!

\$W	\$F	\$G	\$B
62	77	67	144



LOT  
5**SHB VERSATILE 50L**

Birth Date: 01/12/23

AAA 20867208

ANGUS<sup>GS</sup>BALDRIDGE  
VERSATILE  
AAA 19563587

BALDRIDGE FORECASTER B160

BALDRIDGE BLACKBIRD A030

V D A R HERO 7333

SHB EMULOUS E388

AAA 18992432

SHB EMULOUS ELLUNA Y180

G A R PROPHET

BALDRIDGE PRATISSA W165

HOOVER DAM

BALDRIDGE BLACKBIRD X89

DFA HERO 6017

V D A R LUCY 6641

C R R EMULOUS 26 17

SHB RIGHT TIME 4196

BW	78
AWW	725
RATIO	103
AYW	1312
RATIO	106

CED	BW	WW	YW	MILK	CW	MARB	RE	FAT
5	0.5	67	113	17	42	0.84	0.55	-0.025

A Versatile son that scanned with added ribeye, reflecting the muscle genetics back in his pedigree coming through the CRR Emulous sire.

\$W	\$F	\$G	\$B
54	75	64	140

LOT  
7**SHB VERSATILE 68L**

Birth Date: 01/16/23

AAA 20867213

ANGUS<sup>GS</sup>BALDRIDGE  
VERSATILE  
AAA 19563587

BALDRIDGE FORECASTER B160

BALDRIDGE BLACKBIRD A030

SHB SPOKANE 183A

SHB NICKY D332

AAA 18732149

SHB NICKY 5231

G A R PROPHET

BALDRIDGE PRATISSA W165

HOOVER DAM

BALDRIDGE BLACKBIRD X89

SHB PENDLETON 9201

SHB ELLUNA ONWARD 7202

NICHOLS EXTRA H6

S H B FORTUNE INK 8204

BW	86
AWW	722
RATIO	102
AYW	1260
RATIO	102

CED	BW	WW	YW	MILK	CW	MARB	RE	FAT
6	2.4	72	124	23	55	0.88	0.57	-0.006

A balanced EPD Versatile son with an emphasis on growth, from a dam by the 2014 Midland Bull Test sale feature, SHB Spokane, who sold to the partnership of Les Craft Angus and Van Dyke Angus.

\$W	\$F	\$G	\$B
62	88	65	153

LOT  
8**SHB VERSATILE 74L**

Birth Date: 01/14/23

AAA 20867206

ANGUS<sup>GS</sup>BALDRIDGE  
VERSATILE  
AAA 19563587

BALDRIDGE FORECASTER B160

BALDRIDGE BLACKBIRD A030

SHB SPOKANE 183A

VDAR ELLUNA 6472

AAA 18409799

V D A R ELLUNA 3167

G A R PROPHET

BALDRIDGE PRATISSA W165

HOOVER DAM

BALDRIDGE BLACKBIRD X89

SHB PENDLETON 9201

SHB ELLUNA ONWARD 7202

V D A R ALLIANCE 4368

V D A R ELLUNA 9753

BW	85
AWW	711
RATIO	101
AYW	1258
RATIO	102

CED	BW	WW	YW	MILK	CW	MARB	RE	FAT
4	3.4	66	116	20	52	0.98	0.64	-0.012

A 3/4 brother to Lot 7, by Versatile from another SHB Spokane female. Ties to the Elluna cow family twice, with our long time Rita donor in there as well!

\$W	\$F	\$G	\$B
50	99	72	170

LOT  
6**SHB VERSATILE 88L**

Birth Date: 01/15/23

AAA 20867217

ANGUS<sup>GS</sup>BALDRIDGE  
VERSATILE  
AAA 19563587

BALDRIDGE FORECASTER B160

BALDRIDGE BLACKBIRD A030

SHB PENDLETON 427E

SHB LASS G481

AAA 19701560

VDAR LASS 6417

G A R PROPHET

BALDRIDGE PRATISSA W165

HOOVER DAM

BALDRIDGE BLACKBIRD X89

HARB PENDLETON 765 J H

S H B 837 RITA 3136

V D A R CEDAR WIND 8111

V D A R LASS 4152

BW	78
AWW	742
RATIO	105
AYW	1193
RATIO	96

CED	BW	WW	YW	MILK	CW	MARB	RE	FAT
8	0.2	61	99	23	39	1.43	0.54	0.002

Our Versatile bulls were very well received in last year's sale, and for good reason. They just do a lot of things well, in an attractive physical package. This bull really displays the high Marbling genetics available with Versatile, with his Marbling EPD and his own amazing 157 IMF ratio!

\$W	\$F	\$G	\$B
63	80	92	173

*Minimum Genetic Requirements*

	Value
Marbling EPD (Marb)	+0.65
Dollar Grid Carcass Index (\$G)	+55.0

The Targeting the Brand™ logo is designed to highlight registered Angus bulls with greater genetic potential to produce calves meeting the most challenging specifications of the Certified Angus Beef® brand. Bulls must meet genetic requirements of +0.65 Marbling EPD and +55 \$ Grid of non-parent Angus sires to qualify for use of the Targeting the Brand™ logo.

LOT  
9**SHB VERSATILE 47L**

Birth Date: 01/16/23

AAA 20870929

ANGUS<sup>GS</sup>BALDRIDGE  
VERSATILE  
AAA 19563587

BALDRIDGE FORECASTER B160

BALDRIDGE BLACKBIRD A030

SITZ STELLAR 456F

SHB PRIDE H528

AAA 20323629

SHB PRIDE E375

G A R PROPHET

BALDRIDGE PRATISSA W165

HOOVER DAM

BALDRIDGE BLACKBIRD X89

SITZ STELLAR 726D

SITZ ELLUNAS ELITE 3948

CONNEALY BLACK GRANITE

SHB PRIDE A265

BW	74
AWW	666
RATIO	94
AYW	1168
RATIO	94

CED	BW	WW	YW	MILK	CW	MARB	RE	FAT
8	-0.1	62	109	24	45	1.37	0.41	0.023

Yet another top-scanning (167 ratio!) Versatile that's super high for Marbling, and also for Docility (1%).

\$W	\$F	\$G	\$B
62	89	86	174





LOT  
10

## SHB VERSATILE 57L

Birth Date: 01/13/23

AAA 20867201

ANGUS

BALDRIDGE  
VERSATILE  
AAA 19563587

BALDRIDGE FORECASTER B160  
BALDRIDGE PRATISSA W165  
BALDRIDGE BLACKBIRD A030

V D A R STOUT 1623  
VDAR LUCY 6433  
AAA 18409623

G A R PROPHET  
BALDRIDGE PRATISSA W165  
HOOVER DAM  
BALDRIDGE BLACKBIRD X89  
V D A R BLACK CEDAR 8380  
V D A R LASS 0464  
V D A R HERO 7072  
V D A R LUCY 2573

BW	81
AWW	674
RATIO	96
AYW	1176
RATIO	95

CED	BW	WW	YW	MILK	CW	MARB	RE	FAT
7	-0.2	53	95	23	16	1.07	0.02	0.017

\$W	\$F	\$G	\$B
54	51	66	117

These Versatile sons are just consistent, bringing added Marbling and Docility genetics to a well-balanced overall EPD package. We appreciate that laid-back attitude in his daughters!

LOT  
11

## SHB VERSATILE 58L

Birth Date: 01/17/23

AAA 20867197

ANGUS



BALDRIDGE  
VERSATILE  
AAA 19563587

BALDRIDGE FORECASTER B160  
BALDRIDGE PRATISSA W165  
BALDRIDGE BLACKBIRD A030

A A R TEN X 7008 S A  
SHB J B LADY A247  
AAA 17702538

SHB J B LADY 8204

G A R PROPHET  
BALDRIDGE PRATISSA W165  
HOOVER DAM  
BALDRIDGE BLACKBIRD X89  
MYTTY IN FOCUS  
A A R LADY KELTON 5551  
HYLINE RIGHT TIME 338  
SHB RIGHT NOW 4176

BW	82
AWW	732
RATIO	104
AYW	1228
RATIO	99

CED	BW	WW	YW	MILK	CW	MARB	RE	FAT
8	0.6	63	112	27	38	1.06	0.33	0.019

\$W	\$F	\$G	\$B
66	65	69	134

Versatile makes it tough on the other sire groups for IMF ratio, with their consistent excellence for Marbling scan, with this one ratioing 151! Far from a one-trick pony, that carcass quality is just an added bonus with all the other qualities he brings to the table.

LOT  
12

## SHB VERSATILE 78L

Birth Date: 01/16/23

AAA 20867196

ANGUS

BALDRIDGE  
VERSATILE  
AAA 19563587

BALDRIDGE FORECASTER B160  
BALDRIDGE PRATISSA W165  
BALDRIDGE BLACKBIRD A030

PURE GOLD OF PAR  
SHB GOLDEN GIRL 225  
AAA 17431681

G A R PROPHET  
BALDRIDGE PRATISSA W165  
HOOVER DAM  
BALDRIDGE BLACKBIRD X89  
BASIN YELLOWSTONE R178  
LASSIE OF P A R 760  
VDAR LUCY'S BOY 1550  
BECK'S DESERT DESTINY RITO

BW	76
AWW	724
RATIO	103
AYW	1306
RATIO	106

CED	BW	WW	YW	MILK	CW	MARB	RE	FAT
4	2.5	72	128	15	57	0.80	0.53	0.011

\$W	\$F	\$G	\$B
52	103	59	162

Another Versatile, another high Marbling scan! He ratioed 135 for IMF and had a big ribeye as well. Pure Gold of PAR as his mgs adds a shot of eye-appeal to the equation.

LOT  
13

## SHB VERSATILE 94L

Birth Date: 01/15/23

AAA 20867194

ANGUS



BALDRIDGE  
VERSATILE  
AAA 19563587

BALDRIDGE FORECASTER B160  
BALDRIDGE PRATISSA W165  
BALDRIDGE BLACKBIRD A030

MYTTY IN FOCUS  
SHB ANNIE Z203  
AAA 17431659

JAYNBEE ANNIE 256J

G A R PROPHET  
BALDRIDGE PRATISSA W165  
HOOVER DAM  
BALDRIDGE BLACKBIRD X89  
S A F FOCUS OF E R  
MYTTY COUNTESS 906  
JAYNBEE RAINMAKER 11D  
JAYNBEE ANNIE 416F

BW	76
AWW	704
RATIO	100
AYW	1173
RATIO	95

CED	BW	WW	YW	MILK	CW	MARB	RE	FAT
13	-1.3	67	116	25	42	0.93	0.38	0.002

\$W	\$F	\$G	\$B
66	76	65	140

Versatile x the great old Mytty In Focus bull, makes for a good calving-ease bull safe for use on heifers.

LOT  
14

## SHB VERSATILE 31L

Birth Date: 01/16/23

AAA 20867203

ANGUS



BALDRIDGE  
VERSATILE  
AAA 19563587

BALDRIDGE FORECASTER B160  
BALDRIDGE PRATISSA W165  
BALDRIDGE BLACKBIRD A030

V D A R CHURCHILL 1063  
VDAR LASS 6456  
AAA 18409639

G A R PROPHET  
BALDRIDGE PRATISSA W165  
HOOVER DAM  
BALDRIDGE BLACKBIRD X89  
DFA HERO 6017  
V D A R FOREVER LADY 1409  
COLE CREEK BLACK CEDAR 46P  
V D A R LASS 6302

BW	79
AWW	634
RATIO	90
AYW	1152
RATIO	94

CED	BW	WW	YW	MILK	CW	MARB	RE	FAT
8	0.7	59	104	16	18	1.08	0.36	0.018

\$W	\$F	\$G	\$B
49	55	71	125

Another calving-ease bull with a strong carcass scan, from a Van Dyke dam. The VDAR cows exhibit more maternal than just what the numbers say, you can't measure mothering ability with an EPD!



LOT  
**15****SHB BOMBER 80L**

Birth Date: 01/13/23

AAA 20867230

**ANGUS**<sup>GS</sup>**VERMILION  
BOMBER G017**  
AAA 19498421CASINO BOMBER N33  
VERMILION EDWINA 7078**SHB RITA F415**

AAA 19473026

HA COWBOY UP 5405  
SHB RITA 9116KM BROKEN BOW 002  
CASINO ANNIE K48  
SITZ JLS GAME DAY 9630  
VERMILION EDWINA 5297  
HA OUTSIDE 3008  
HA BLACKCAP LADY 1602  
HARB PENDLETON 765 J H  
S H B 837 RITA 3136

BW	86
AWW	793
RATIO	112
AYW	1377
RATIO	111

CED	BW	WW	YW	MILK	CW	MARB	RE	FAT
0	3.1	89	151	24	74	0.28	0.69	-0.020

\$W	\$F	\$G	\$B
72	115	37	153

The first of our Bomber G017 sons, we think you'll like them! This one has the individual performance to back his elite DNA rankings for the growth traits, and he's from a dam stemming from the full sister to Pendleton 9201.



LOT 15

LOT  
**16****SHB BOMBER 30L**

Birth Date: 01/07/23

AAA 20867228

**ANGUS**<sup>GS</sup>**VERMILION  
BOMBER G017**  
AAA 19498421CASINO BOMBER N33  
VERMILION EDWINA 7078**VDAR ELLUNA 6429**

AAA 18409620

V D A R HERO 7072  
V D A R HAZEL 0319  
V D A R BLACK CEDAR 8380  
V D A R ELLUNA 2535KM BROKEN BOW 002  
CASINO ANNIE K48  
SITZ JLS GAME DAY 9630  
VERMILION EDWINA 5297  
DFA HERO 6017  
V D A R HAZEL 0319  
V D A R BLACK CEDAR 8380  
V D A R ELLUNA 8348

BW	79
AWW	738
RATIO	105
AYW	1274
RATIO	104

CED	BW	WW	YW	MILK	CW	MARB	RE	FAT
13	-0.8	72	112	26	50	0.38	0.58	0.045

\$W	\$F	\$G	\$B
80	85	36	121

Vermilion Bomber G017 boasts one of the most impressive birth-growth spreads to be found, and this sire group validates those EPD's with consistently heavy weaning and yearling weights. This calving-ease bull's dam comes direct from the storied Van Dyke Angus program in Montana.



LOT 16

LOT  
**17****SHB BOMBER 86L**

Birth Date: 01/11/23

AAA 20867231

**ANGUS**<sup>GS</sup>**VERMILION  
BOMBER G017**  
AAA 19498421CASINO BOMBER N33  
VERMILION EDWINA 7078**VDAR LASS 6494**

AAA 18409809

KA BLACK CEDAR 080  
V D A R LASS 3111KM BROKEN BOW 002  
CASINO ANNIE K48  
SITZ JLS GAME DAY 9630  
VERMILION EDWINA 5297  
COLE CREEK BLACK CEDAR 46P  
K A MISS WIX 8021  
V D A R BLACK CEDAR 8380  
V D A R LASS 0406

BW	80
AWW	782
RATIO	111
AYW	1251
RATIO	101

CED	BW	WW	YW	MILK	CW	MARB	RE	FAT
8	-0.1	71	111	20	52	0.23	0.57	0.012

\$W	\$F	\$G	\$B
70	87	30	118

Another heavy weaning G107 son, from a dam posting a progeny record of 2-95 BR and 2-109 NR, coming directly from Van Dyke Angus in Montana.

LOT  
**18****SHB BOMBER 77L**

Birth Date: 01/14/23

AAA 20867232

**ANGUS**<sup>GS</sup>**VERMILION  
BOMBER G017**  
AAA 19498421CASINO BOMBER N33  
VERMILION EDWINA 7078**SHB ENTENSE E370**

AAA 18992429

CONNEALY CAPITALIST 028  
COLEMAN EVERELDA ENTENSE 981KM BROKEN BOW 002  
CASINO ANNIE K48  
SITZ JLS GAME DAY 9630  
VERMILION EDWINA 5297  
S A V FINAL ANSWER 0035  
PRIDES PITA OF CONANGA 8821  
N BAR PRIME TIME D806  
COLEMAN EVERELDA ENTENSE 516

BW	77
AWW	745
RATIO	106
AYW	1343
RATIO	109

CED	BW	WW	YW	MILK	CW	MARB	RE	FAT
9	0.1	77	126	16	53	0.66	0.87	0.036

\$W	\$F	\$G	\$B
67	89	55	143

The G017 Bomber sire group has really impressed, adding a tick more muscle and thickness to the performance that his sire is known for. This bull scanned exceptionally well for both Marbling and Ribeye!





LOT 19

## LOT 19 SHB BOMBER 531

Birth Date: 01/08/23

AAA 20867227

ANGUS<sup>SS</sup>

VERMILION BOMBER G017 AAA 19498421	CASINO BOMBER N33	KM BROKEN BOW 002	BW	83
	VERMILION EDWINA 7078	CASINO ANNIE K48	AWW	827
VDAR LASS 6408 AAA 18409600	V D A R HERO 7072	SITZ JLS GAME DAY 9630	RATIO	117
	V D A R LASS 3125	VERMILION EDWINA 5297	AYW	1326
		DFA HERO 6017	RATIO	107
		V D A R HAZEL 0319		
		V D A R BLACK CEDAR 8380		
		V D A R LASS 8344		

CED	BW	WW	YW	MILK	CW	MARB	RE	FAT
13	-0.4	85	139	19	55	0.31	0.40	-0.008

Here he is, our heaviest adjusted weaning weight bull at 827 pounds, with a 117 ratio! Tremendous spread from his birth to his growth EPD's.	\$W	\$F	\$G	\$B
	76	86	34	120

## LOT 20 SHB BOMBER 341

Birth Date: 01/14/23

AAA 20867226

ANGUS<sup>SS</sup>

VERMILION BOMBER G017 AAA 19498421	CASINO BOMBER N33	KM BROKEN BOW 002	BW	74
	VERMILION EDWINA 7078	CASINO ANNIE K48	AWW	693
VDAR PF HYALITE 6402 AAA 18409594	V D A R HERO 7072	SITZ JLS GAME DAY 9630	RATIO	98
	V D A R PF HYALITE 4137	VERMILION EDWINA 5297	AYW	1219
		DFA HERO 6017	RATIO	99
		V D A R HAZEL 0319		
		V D A R BLACK CEDAR 8380		
		V D A R PF HYALITE 9771		

CED	BW	WW	YW	MILK	CW	MARB	RE	FAT
10	-0.1	66	104	21	45	0.30	0.08	0.028

A calving-ease Bomber son, with a top 10% \$Maternal Index.

\$W	\$F	\$G	\$B
67	80	26	107

## LOT 21 SHB BOMBER 391

Birth Date: 01/11/23

AAA 20867211

ANGUS<sup>SS</sup>

VERMILION BOMBER G017 AAA 19498421	CASINO BOMBER N33	KM BROKEN BOW 002	BW	89
	VERMILION EDWINA 7078	CASINO ANNIE K48	AWW	656
SHB PIONEER'S INK E381 AAA 18995557	TC FRANKLIN 619	SITZ JLS GAME DAY 9630	RATIO	93
	SHB PIONEER'S INK 1014	VERMILION EDWINA 5297	AYW	1171
		TC TOTAL 410	RATIO	95
		TC MARCIA 1069		
		S A V PIONEER 7301		
		SHB INK SPOT 8222		

CED	BW	WW	YW	MILK	CW	MARB	RE	FAT
1	2.6	80	127	20	52	0.35	0.60	0.030

Lot 21 lives up to his "Vermilion Ranch" pedigree of G017 x TC Franklin, with his emphasis on the growth traits.

\$W	\$F	\$G	\$B
72	89	36	124



LOT 22

## LOT 22 SHB INCENTIVE 61L

Birth Date: 01/10/23

AAA 20869976

ANGUS<sup>SS</sup>

SITZ INCENTIVE 704H AAA 19677938	SITZ STELLAR 7260	MOHNN SUBSTANTIAL 272	BW	83
	SITZ BARBARAMERE NELL 53F	SITZ PRIDE 200B	AWW	687
SHB RITA F413 AAA 19473013	BALDRIDGE COLONEL C251	SITZ INVASION 574D	RATIO	97
	S H B 837 RITA 3136	SITZ BARBARAMERE NELL 105D	AYW	1370
		BALDRIDGE XPAND X743	RATIO	111
		BALDRIDGE ISABEL Y69		
		G K A F RITO 837		
		S-H-B MERGER 1140		

CED	BW	WW	YW	MILK	CW	MARB	RE	FAT
-2	2.5	74	140	31	53	0.68	0.35	0.004

The Sitz Incentive sire group has impressed with their thickness and muscle. Lot 22 was one of our highest yearling ratio bulls, from an ET Colonel daughter of the great 3136 Rita donor, who for many years consistently produced our top bulls.

\$W	\$F	\$G	\$B
63	89	51	140



LOT  
**23****SHB INCENTIVE 63L**

Birth Date: 01/08/23

AAA 20869975

**ANGUS**<sup>GS</sup>SITZ INCENTIVE 704H  
AAA 19677938

SITZ STELLAR 726D

SITZ BARBARAMERE NELL 53F

SHB BLACKBIRD F421  
AAA 19473018

BALDRIDGE COLONEL C251

PINE COULEE BLACKBIRD 2V38

MOHNEN SUBSTANTIAL 272

SITZ PRIDE 200B

SITZ INVASION 574D

SITZ BARBARAMERE NELL 105D

BALDRIDGE XPAND X743

BALDRIDGE ISABEL Y69

SVF GOAR 216 LTD

A A R BLACKBIRD 1320

BW 78

AWW 761

RATIO 108

AYW 1359

RATIO 110

CED	BW	WW	YW	MILK	CW	MARB	RE	FAT
10	-0.4	56	109	30	48	0.66	0.83	0.038

Another Incentive/Colonel genetic blend, with excellent calving-ease and strong growth, posting high weaning and yearling ratios. He also was one of our top-scanning bulls for both IMF and Ribeye!

\$W	\$F	\$G	\$B
60	95	54	148



LOT 23

LOT  
**24****SHB INCENTIVE 55L**

Birth Date: 01/14/23

AAA 20869922

**ANGUS**<sup>GS</sup>SITZ INCENTIVE 704H  
AAA 19677938

SITZ STELLAR 726D

SITZ BARBARAMERE NELL 53F

SHB RITA 6476  
AAA 19701556

CASINO BOMBER N33

S H B 837 RITA 3136

MOHNEN SUBSTANTIAL 272

SITZ PRIDE 200B

SITZ INVASION 574D

SITZ BARBARAMERE NELL 105D

KM BROKEN BOW 002

CASINO ANNIE K48

G K A F RITO 837

S-H-B MERGER 1140

BW 73

AWW 721

RATIO 102

AYW 1214

RATIO 98

CED	BW	WW	YW	MILK	CW	MARB	RE	FAT
8	-1.2	58	108	39	53	0.71	0.78	0.013

Sitz Incentive going back to the great 3136 Rita donor again, but this time through a Bomber dam. Calving-ease bull yet with a big ribeye!

\$W	\$F	\$G	\$B
71	94	58	152

LOT  
**25****SHB ACHIEVEMENT 41L**

Birth Date: 02/05/23

AAA 20867200

**ANGUS**<sup>GS</sup>SITZ ACHIEVEMENT 723H  
AAA 19677938

POSS ACHIEVEMENT

SITZ EMMA E 113F

VDAR LASS 6417  
AAA 18409610

V D A R CEDAR WIND 8111

V D A R LASS 4152

POSS LASTING IMPACT 3118

POSS ERICA 327

SITZ ASSET 402C

SITZ EMMA E 328

COLE CREEK CEDAR RIDGE 1V

V D A R CHLOE 9727

V D A R FOUR CORNERS 8232

V D A R LASS 8344

BW 75

AWW 714

RATIO 101

AYW 1368

RATIO 110

CED	BW	WW	YW	MILK	CW	MARB	RE	FAT
8	0.9	65	119	18	39	0.17	0.31	0.007

A light birthweight individual, yet he still ended up as one of our heaviest at yearling, posting a 110 ratio!

\$W	\$F	\$G	\$B
50	81	24	105

LOT  
**26****SHB COMMERCE 62L**

Birth Date: 01/08/23

AAA 20872359

**ANGUS**<sup>GS</sup>SITZ COMMERCE 670F  
AAA 19078171

SITZ INVASION 574D

SITZ PRIDE 101D

SHB J B LADY E379  
AAA 18992430

SHB PENDLETON 9201

SHB J B LADY 8204

CONNEALY CONQUEST

SITZ SUPERMAMA 173Z

MOHNEN SUBSTANTIAL 272

SITZ PRIDE 49B

HARB PENDLETON 765 J H

S H B 837 RITA 3136

HYLINE RIGHT TIME 338

SHB RIGHT NOW 4176

BW 83

AWW 696

RATIO 99

AYW 1171

RATIO 95

CED	BW	WW	YW	MILK	CW	MARB	RE	FAT
3	1.9	66	111	10	44	0.43	0.55	0.027

A well-balanced son of the Vermilion herdsire, Sitz Commerce. He offers moderation of Milk for those who are looking for that trait.

\$W	\$F	\$G	\$B
45	82	39	122



## LOT 27 SHB COMMERCE 48L

Birth Date: 01/11/23 AAA 20872356 ANGUS<sup>GS</sup>

SITZ INVASION 574D	CONNEALY CONQUEST	BW	76
AAA 19078171	SITZ SUPERMAMA 173Z	AWW	776
SITZ PRIDE 101D	MOHNEN SUBSTANTIAL 272	RATIO	110
	SITZ PRIDE 49B	AYW	1208
CONNEALY COMRADE 1385	CONNEALY CONSENSUS 7229	RATIO	98
SHB ELLUNA E357	HAPPY GEE OF CONANGA 919		
AAA 18993558	CONNEALY CAPITALIST 028		
SHB ELLUNA A264	SHB ELLUNA Y163		

CED	BW	WW	YW	MILK	CW	MARB	RE	FAT
15	-2.7	62	102	27	29	0.09	0.72	0.007

Lot 27's pedigree stack of Commerce x Comrade x Capitalist is consistent for low birthweight, and his genomics and EPD's indicate that he's a reliable choice for using on heifers. Yet he weaned with a strong 110 ratio!

\$W	\$F	\$G	\$B
71	59	26	84

## LOT 28 SHB COMMERCE 69L

Birth Date: 01/14/23 AAA 20872360 ANGUS<sup>GS</sup>

SITZ INVASION 574D	CONNEALY CONQUEST	BW	78
AAA 19078171	SITZ SUPERMAMA 173Z	AWW	681
SITZ PRIDE 101D	MOHNEN SUBSTANTIAL 272	RATIO	97
	SITZ PRIDE 49B	AYW	1155
CONNEALY COUNTDOWN	CONNEALY FINAL SOLUTION	RATIO	94
SHB ECLIPES D292	ENTARNA OF CONANGA 140		
AAA 18732602	V D A R ELLUNA 4167		
SHB ECLIPES 5221			

CED	BW	WW	YW	MILK	CW	MARB	RE	FAT
8	0.2	60	99	14	34	0.44	0.31	0.051

Another calving-ease Commerce son that would be a good choice to breed heifers to.

\$W	\$F	\$G	\$B
52	67	35	102

## LOT 29 SHB STELLAR 84L

Birth Date: 01/13/23 AAA 20867233 ANGUS<sup>GS</sup>

MOHNEN SUBSTANTIAL 272	BENFIELD SUBSTANCE 8506	BW	80
SITZ STELLAR 726D	MOHNEN GLYN MAWR ELBA 1758	AWW	683
AAA 18397542	CONNEALY FINAL PRODUCT	RATIO	97
SITZ PRIDE 200B	SITZ PRIDE 308Y	AYW	1313
CONNEALY COUNTDOWN	CONNEALY FINAL SOLUTION	RATIO	106
SHB INK SPOT E376	ENTARNA OF CONANGA 140		
AAA 18996178	VERMILION VANGUARD		
SHB INK SPOT A252	SHB INK SPOT Y171		

CED	BW	WW	YW	MILK	CW	MARB	RE	FAT
3	1.1	73	136	28	55	0.67	0.65	0.000

Sitz Stellar and his sons and grandsons have done a lot of good for the breed and for the cattle industry, improving feet and udder quality consistently. Lot 29 offers strong growth traits in a powerful physical package.

\$W	\$F	\$G	\$B
70	97	55	152

## LOT 30 SHB LOGO 42L

Birth Date: 02/09/23 AAA 20867651 ANGUS<sup>GS</sup>

SITZ LOGO 12964	SITZ TEBOW 11860	BW	85
JCH J&K LOGO 9532	SITZ SHAUNA 3152	AWW	679
AAA 19621209	SITZ UPWARD 307R	RATIO	96
JCH J&K POLLY 2612	J C H POLLY 4023	AYW	1217
RAVEN POWERBALL 53	PA POWER TOOL 9108	RATIO	98
SITZ PRIDE 64E	RAVEN EMMA E 4241		
AAA 18741003	BALDRIDGE NEXT STEP Y108		
SITZ PRIDE 109C	SITZ PRIDE 48A		

CED	BW	WW	YW	MILK	CW	MARB	RE	FAT
5	1.5	82	143	24	61	0.54	0.76	0.030

Good maternal blend here, by J & K Logo and out of our Sitz Pride female. Strong for growth and \$M, as you'd expect!

\$W	\$F	\$G	\$B
75	99	47	147

## LOT 31 SHB LOGO 72L

Birth Date: 02/08/23 AAA 20867236 ANGUS<sup>GS</sup>

SITZ LOGO 12964	SITZ TEBOW 11860	BW	79
JCH J&K LOGO 9532	SITZ SHAUNA 3152	AWW	714
AAA 19621209	SITZ UPWARD 307R	RATIO	101
JCH J&K POLLY 2612	J C H POLLY 4023	AYW	1312
SITZ STELLAR 726D	MOHNEN SUBSTANTIAL 272	RATIO	106
SHB RITA H509	SITZ PRIDE 200B		
AAA 20323615	HA COWBOY UP 5405		
SHB RITA F415	SHB RITA 9116		

CED	BW	WW	YW	MILK	CW	MARB	RE	FAT
4	3.6	91	155	16	72	0.12	0.48	0.048

These Logo Bulls should enhance the maternal traits in your cowherd, with the Logo sire line well known for fertility improvement.

\$W	\$F	\$G	\$B
66	112	21	133

## LOT 32 SHB LOGO 73L

Birth Date: 02/08/23 AAA 20867235 ANGUS<sup>GS</sup>

SITZ LOGO 12964	SITZ TEBOW 11860	BW	77
JCH J&K LOGO 9532	SITZ SHAUNA 3152	AWW	748
AAA 19621209	SITZ UPWARD 307R	RATIO	106
JCH J&K POLLY 2612	J C H POLLY 4023	AYW	1319
FF BLACK GOLD JF C19	CONNEALY BLACK GRANITE	RATIO	107
SHB LUCY G471	JF BARBARAMERE Y3		
AAA 19701552	S A V BISMARCK 5682		
SHB LUCY 1040	F K A R LUCY		

CED	BW	WW	YW	MILK	CW	MARB	RE	FAT
9	-0.2	73	127	29	52	0.27	0.56	0.041

Lot 32 started small, yet he weaned heavy, posting a 106 WRI!

\$W	\$F	\$G	\$B
72	87	30	117



# LOT 33 SHB LOGO 49L

Birth Date: 02/22/23 AAA 20867192 ANGUS<sup>GS</sup>

SITZ LOGO 12964	SITZ TEBOW 11860	BW	85
JCH J&K LOGO 9532	SITZ SHAUNA 3152	AWW	727
AAA 19621209	SITZ UPWARD 307R	RATIO	103
JCH J&K POLLY 2612	J C H POLLY 4023	AYW	
BUBS SOUTHERN CHARM AA31	SILVEIRAS CONVERSION 8064	RATIO	
SHB NEW DESIGN G468	HICKORY HILL ERICA 009		
AAA 19709968	CONNEALY CONFIDENCE 0100		
SHB NEW DESIGN B222	SHB NEW DESIGN M249-8200		

CED	BW	WW	YW	MILK	CW	MARB	RE	FAT
10	-0.2	65	117	37	44	0.45	0.63	0.068

With DNA enhanced EPD's adding accuracy equal to up to 25 progeny records turned in, this Logo son may be considered for use on heifers. He traces back to the dam of the long-time record holder at Midland Bull Test for average daily gain.

\$W	\$F	\$G	\$B
72	83	38	121

# LOT 34 SHB LOGO 70L

Birth Date: 01/29/23 AAA 20867225 ANGUS<sup>GS</sup>

SITZ LOGO 12964	SITZ TEBOW 11860	BW	79
JCH J&K LOGO 9532	SITZ SHAUNA 3152	AWW	670
AAA 19621209	SITZ UPWARD 307R	RATIO	95
JCH J&K POLLY 2612	J C H POLLY 4023	AYW	1147
SHB PENDLETON 9201	HARB PENDLETON 765 J H	RATIO	93
SHB BLACKBIRD C244	S H B 837 RITA 3136		
AAA 18356672	BON VIEW NEW DESIGN 878		
ELA BLACKBIRD U201	PINE COULEE BLACKBIRD 2V38		

CED	BW	WW	YW	MILK	CW	MARB	RE	FAT
15	-2.3	41	73	34	19	0.32	0.09	0.061

Super low birth, high CED Logo son here, from one of our treasured 9201 daughters!

\$W	\$F	\$G	\$B
58	60	25	85

# LOT 35 SHB OZARK 59L

Birth Date: 01/14/23 AAA 20867209 ANGUS<sup>GS</sup>

COLEMAN BRAVO 6313	COLEMAN CHARLO 0256	BW	77
U2 OZARK 474G	COLEMAN DONNA 714	AWW	669
AAA 19840924	YOUNG DALE XCLUSIVE 25X	RATIO	95
U2 ERELITE 109Z	U-2 ERELITE 1X	AYW	1266
CONNEALY COURAGE 25L	CONNEALY CONFIDENCE 0100	RATIO	102
SHB ELLUNA E341	PEARL PAMMY OF CONANGA 194		
AAA 18993686	SAYRE PATRIOT		
SHB ELLUNA'S PATRIOT 1008	SHB RIGHT TIME 4196		

CED	BW	WW	YW	MILK	CW	MARB	RE	FAT
9	2.0	59	107	17	28	-0.10	0.61	0.005

For low birthweight cattle, the Ozarks display more thickness and muscling than most.

\$W	\$F	\$G	\$B
53	64	15	78



LOT 35

# LOT 36 SHB OZARK 87L

Birth Date: 01/17/23 AAA 20867198 ANGUS<sup>GS</sup>

COLEMAN BRAVO 6313	COLEMAN CHARLO 0256	BW	76
U2 OZARK 474G	COLEMAN DONNA 714	AWW	658
AAA 19840924	YOUNG DALE XCLUSIVE 25X	RATIO	93
U2 ERELITE 109Z	U-2 ERELITE 1X	AYW	1151
BASIN YELLOWSTONE R178	VERMILION YELLOWSTONE	RATIO	93
SHB EVERELDA ENTENSE A248	BASIN CAMILLA L868		
AAA 17702539	G A R EXPECTATION 4915		
COLEMAN EVERELDA ENTENSE 455	SITZ EVERELDA ENTENSE 4789		

CED	BW	WW	YW	MILK	CW	MARB	RE	FAT
1	3.1	59	107	24	48	0.18	0.41	0.023

Lot 36's dam is an ET daughter of the Yellowstone R178 bull, whose sons dominated multiple bull tests over the years.

\$W	\$F	\$G	\$B
54	91	25	116

# LOT 37 SHB OZARK 71L

Birth Date: 01/13/23 AAA 20867193 ANGUS<sup>GS</sup>

COLEMAN BRAVO 6313	COLEMAN CHARLO 0256	BW	77
U2 OZARK 474G	COLEMAN DONNA 714	AWW	693
AAA 19840924	YOUNG DALE XCLUSIVE 25X	RATIO	98
U2 ERELITE 109Z	U-2 ERELITE 1X	AYW	1239
R R RITO 707	RITO N BAR	RATIO	100
COLEMAN LUCY 980	ERISKAY OF ROLLIN ROCK 3		
AAA 16364817	S A V 8180 TRAVELER 004		
DB LUCY 163	BASIN LUCY 178E		

CED	BW	WW	YW	MILK	CW	MARB	RE	FAT
11	-0.8	60	104	24	24	0.02	0.12	0.003

Here's another calving-ease Ozark son, with genetics designed for added muscle as well.

\$W	\$F	\$G	\$B
63	47	14	62



**LOT 38 SHB OZARK 67L**  
Birth Date: 01/13/23 AAA 20867212 **ANGUS<sup>GS</sup>**

COLEMAN BRAVO 6313	COLEMAN CHARLO 0256	BW	81
U2 OZARK 474G AAA 19840924	COLEMAN DONNA 714	AWW	691
U2 ERELITE 109Z	YOUNG DALE XCLUSIVE 25X	RATIO	98
	U-2 ERELITE 1X	AYW	1080
CONNEALY COMMONWEALTH	BASIN PAYWEIGHT 1682	RATIO	87
SHB PRIDE F418 AAA 19471885	PARISIAN OF CONANGA 3582		
SHB PRIDE A265	BASIN YELLOWSTONE R178		
	ERICA PRIDE OF PAR 493		

CED	BW	WW	YW	MILK	CW	MARB	RE	FAT
7	-0.1	55	90	36	32	0.66	0.61	0.000

\$W	\$F	\$G	\$B
74	63	54	117

The Ozark sons will be a good choice if you're concerned about keeping a lid on mature size of your cows, and they are always among our most popular bulls on sale day!



EXAR STOCK FUND 9097B :: SIRE OF LOTS 40-41

**LOT 39 SHB OZARK 60L**  
Birth Date: 01/10/23 AAA 20867229 **ANGUS<sup>GS</sup>**

COLEMAN BRAVO 6313	COLEMAN CHARLO 0256	BW	76
U2 OZARK 474G AAA 19840924	COLEMAN DONNA 714	AWW	765
U2 ERELITE 109Z	YOUNG DALE XCLUSIVE 25X	RATIO	109
	U-2 ERELITE 1X	AYW	1173
VDAR SHOSHONE 7926	V D A R CEDAR WIND 8111	RATIO	95
SHB ELLUNA F422 AAA 19482432	VDAR ESTER 1471		
VDAR ELLUNA 6460	V D A R CHURCHILL 1063		
	V D A R ELLUNA 6371		

CED	BW	WW	YW	MILK	CW	MARB	RE	FAT
2	2.5	63	108	27	47	0.20	0.22	0.008

\$W	\$F	\$G	\$B
61	87	25	111

Lot 39 balances individual performance ratios of 94 for birthweight, and 109 for weaning weight!

**LOT 40 SHB STOCK FUND 76L**  
Birth Date: 01/18/23 AAA 20867223 **ANGUS<sup>GS</sup>**

DEER VALLEY GROWTH FUND	BASIN PAYWEIGHT 1682	BW	78
EXAR STOCK FUND 9097B AAA 19411210	DEER VALLEY RITA 36113	AWW	678
EXAR EMPRESS 0875	G A R PROPHET K243	RATIO	96
	EXAR EMPRESS 2622	AYW	1185
U-2 COALITION 206C	HF SYNDICATE 213Z	RATIO	96
SHB J B LADY H530 AAA 20323631	U2 ERELITE 109Z		
SHB J B LADY 8204	HYLINE RIGHT TIME 338		
	SHB RIGHT NOW 4176		

CED	BW	WW	YW	MILK	CW	MARB	RE	FAT
15	-2.0	66	126	34	55	0.63	0.84	0.036

\$W	\$F	\$G	\$B
72	97	53	150

The ABS Global sire, Stock Fund, is a popular choice for those wanting to add a touch of style to their cattle. This bull has excellent EPD's for CED and Birthweight.

**LOT 41 SHB STOCK FUND 85L**  
Birth Date: 01/12/23 AAA 20867222 **ANGUS<sup>GS</sup>**

DEER VALLEY GROWTH FUND	BASIN PAYWEIGHT 1682	BW	79
EXAR STOCK FUND 9097B AAA 19411210	DEER VALLEY RITA 36113	AWW	757
EXAR EMPRESS 0875	G A R PROPHET K243	RATIO	107
	EXAR EMPRESS 2622	AYW	1298
U-2 COALITION 206C	HF SYNDICATE 213Z	RATIO	105
SHB GRANDEUR H506 AAA 20323613	U2 ERELITE 109Z		
SHB GRANDEUR 9128	COLEMAN IMAGE MAKER 688		
	S H B BR MISSY 3150		

CED	BW	WW	YW	MILK	CW	MARB	RE	FAT
11	1.1	72	133	28	51	0.70	0.70	0.021

\$W	\$F	\$G	\$B
70	96	55	152

A 3/4 brother to Lot 40, with both being out of Coalition dams. One of our heavier bulls at weaning.

**LOT 42 SHB PENDLETON 64L**  
Birth Date: 01/11/23 AAA 20867215 **ANGUS<sup>GS</sup>**

HARB PENDLETON 765 J H	S A V FINAL ANSWER 0035	BW	88
SHB PENDLETON 9201 AAA 16430651	H A R B BLACK LADY 375 J H	AWW	647
S H B 837 RITA 3136	G K A F RITO 837	RATIO	92
	S-H-B MERGER 1140	AYW	1236
V D A R BLACK TRAIN 1243	CROOK MT REALLY WINDY 141	RATIO	100
SHB ELLUNA BOND F441 AAA 19472889	V D A R LASS 5714		
SHB ELLUNA BOND 1020	DUNLOUISE COMMANDER BONDF76		
	SHB MISS TRAVELER 004 6269		

CED	BW	WW	YW	MILK	CW	MARB	RE	FAT
-3	3.6	45	83	22	38	-0.24	0.48	-0.035

\$W	\$F	\$G	\$B
32	87	9	96

Pendleton 901 has been an important part of our program for many years, and we're still using him to add more of his daughters to our herd. We think his sons should sire quality females.



LOT  
43

## SHB GALLATIN 51L

Birth Date: 01/29/23

AAA 20867224

ANGUS<sup>GS</sup>

VDAR GALLATIN 7586

AAA 19701602

VDAR GALLATIN 2440

V D A R LASS 4113

SITZ STELLAR 456F

SHB LUCY H532

AAA 20323633

SHB LUCY F412

V D A R SONNY BOY 1194

V D A R LASS 2525

V D A R CEDAR WIND 8111

V D A R LASS 2559

SITZ STELLAR 726D

SITZ ELLUNAS ELITE 394B

V D A R CEDAR WIND 5126

VDAR LUCY 6433

BW	77
AWW	719
RATIO	102
AYW	1276
RATIO	103

CED	BW	WW	YW	MILK	CW	MARB	RE	FAT
6	2.1	75	128	32	49	0.81	0.02	0.048

The VDAR Gallatin sire group will appeal to those cattlemen looking for higher growth genetics but want to keep some maternal ability also. His genomic ranking for Docility indicates quiet, calm cattle.

\$W	\$F	\$G	\$B
71	82	50	132



VDAR GALLATIN 2440 :: SIRE OF LOTS 43-45

LOT  
44

## SHB GALLATIN 54L

Birth Date: 01/24/23

AAA 20867216

ANGUS<sup>GS</sup>

VDAR GALLATIN 7586

AAA 19701602

VDAR GALLATIN 2440

V D A R LASS 4113

BASIN BONUS 4345

SHB INK SPOT F407

AAA 19474092

SHB INK SPOT A252

V D A R SONNY BOY 1194

V D A R LASS 2525

V D A R CEDAR WIND 8111

V D A R LASS 2559

BASIN PAYWEIGHT 1682

BASIN ERICA 2223

VERMILION VANGUARD

SHB INK SPOT Y171

BW	85
AWW	654
RATIO	93
AYW	1316
RATIO	107

CED	BW	WW	YW	MILK	CW	MARB	RE	FAT
-1	3.1	88	149	28	68	0.67	0.06	0.003

A good bull for adding growth genetics, his genomic ranking for Weaning weight is in the top 1% of the breed!

\$W	\$F	\$G	\$B
76	108	47	154

LOT  
45

## SHB GALLATIN 75L

Birth Date: 01/30/23

AAA 20867205

ANGUS<sup>GS</sup>

VDAR GALLATIN 7586

AAA 19701602

VDAR GALLATIN 2440

V D A R LASS 4113

GINGER HILL TREASURE 233

VDAR LUCY 6485

AAA 18409661

V D A R LUCY 4175

V D A R SONNY BOY 1194

V D A R LASS 2525

V D A R CEDAR WIND 8111

V D A R LASS 2559

GINGER HILL TREASURE 804

GINGER HILL HELEN 880

V D A R BLACK CEDAR 8380

V D A R LUCY 1462

BW	75
AWW	745
RATIO	106
AYW	1070
RATIO	87

CED	BW	WW	YW	MILK	CW	MARB	RE	FAT
12	-1.0	50	73	33	8	-0.14	0.08	0.022

Low birthweight Gallatin, yet he weaned strong with a 106 ratio. VDAR prefix top and bottom, which to us confirms his high \$Maternal index!

\$W	\$F	\$G	\$B
67	29	4	33

LOT  
46

## SHB BRAVO 40L

Birth Date: 02/23/23

AAA 20867207

ANGUS<sup>GS</sup>

SACKMANN

AAA 19755268

COLEMAN BRAVO 6313

BRAVO 0508

V D A R LASS 9732

SHB PENDLETON 9201

SHB EVERELDA ENTENSE D308

AAA 18732126

SHB EVERELDA ENTENSE A248

COLEMAN CHARLO 0256

COLEMAN DONNA 714

VDAR RIGHT TIME 1073

V D A R LASS 6300

HARB PENDLETON 765 J H

S H B 837 RITA 3136

BASIN YELLOWSTONE R178

COLEMAN EVERELDA ENTENSE 455

BW	85
AWW	693
RATIO	98
AYW	
RATIO	

CED	BW	WW	YW	MILK	CW	MARB	RE	FAT
9	1.2	60	104	25	45	0.40	0.50	0.019

A nicely balanced set of EPD's, with a lot of maternal greats of the breed in his pedigree. We really like our Pendleton 9201 females.

\$W	\$F	\$G	\$B
62	85	38	123

LOT  
47

## SHB ACCOMPLISHMENT 81L

Birth Date: 01/14/23

AAA 20867221

ANGUS<sup>GS</sup>

SITZ ACCOMPLISHMENT 720F

AAA 19660497

SITZ ACCOMPLISHMENT 12270

SITZ BARBARA PERFECTION 218

BJ'S BULLDOZER 627

SHB BLACKBIRD H502

AAA 20323610

SHB BLACKBIRD E343

POSS ACHIEVEMENT

SITZ BARBARAMERE NELL 166D

4M ELEMENT 405

SITZ BARBARA PERFECTION 166

BJ'S BULLDOZER 418

BJ'S 171X ANNIE K 226

HILLTOP WIDE OPEN 4215

PINE COULEE BLACKBIRD 2V38

BW	81
AWW	672
RATIO	95
AYW	1139
RATIO	92

CED	BW	WW	YW	MILK	CW	MARB	RE	FAT
4	1.4	56	103	22	20	0.42	-0.27	0.031

Sitz Accomplishment x Bulldozer results in a maternally oriented bull that ranks very strong for the Heifer Pregnancy trait.

\$W	\$F	\$G	\$B
47	55	27	82



**LOT 48 SHB ACCOMPLISHMENT 431** **ANGUS<sup>GS</sup>**  
 Birth Date: 01/08/23 AAA 20867220

SITZ ACCOMPLISHMENT 12270 AAA 19660497	POSS ACHIEVEMENT SITZ BARBARA PERFECTION 218	BW 80 AWW 648 RATIO 92 AYW 1174 RATIO 95
SHB BONUS 479F SHB DESIGN H501 AAA 20323609	4M ELEMENT 405 SITZ BARBARA PERFECTION 166 BASIN BONUS 4345 SHB ERICA Y179 SHB PENDLETON 9201 SHB DESERT 8229	

CED	BW	WW	YW	MILK	CW	MARB	RE	FAT
6	1.6	58	101	15	25	0.51	0.31	0.040

\$W	\$F	\$G	\$B
48	61	39	100

A balanced EPD package in this Accomplishment son. He'll reduce mature size in most cows, for those looking to reduce input costs.

**LOT 50 SHB ACCOMPLISHMENT 451** **ANGUS<sup>GS</sup>**  
 Birth Date: 01/12/23 AAA 20867218

SITZ ACCOMPLISHMENT 12270 AAA 19660497	POSS ACHIEVEMENT SITZ BARBARA PERFECTION 218	BW 76 AWW 670 RATIO 95 AYW 1182 RATIO 96
BJ'S BULLDOZER 627 SHB LUCY H496 AAA 20323604	4M ELEMENT 405 SITZ BARBARA PERFECTION 166 BJ'S BULLDOZER 418 BJ'S 171X ANNIE K 226 V D A R STOUT 1623 V D A R LUCY 4110	

CED	BW	WW	YW	MILK	CW	MARB	RE	FAT
11	1.4	68	120	21	43	0.33	0.52	0.033

\$W	\$F	\$G	\$B
55	82	33	115

ot 50 is a calving-ease son of the Accomplishment bull, whose high genomic ranking for Scrotal propels him to the top 1% for SC EPD, indicating higher fertility traits.

**LOT 52 SHB ACCOMPLISHMENT 831** **ANGUS<sup>GS</sup>**  
 Birth Date: 02/06/23 AAA 20867195

SITZ ACCOMPLISHMENT 12270 AAA 19660497	POSS ACHIEVEMENT SITZ BARBARA PERFECTION 218	BW 76 AWW 683 RATIO 97 AYW 1129 RATIO 91
PURE GOLD OF PAR SHB GOLDEN GIRL Z214 AAA 17431670	4M ELEMENT 405 SITZ BARBARA PERFECTION 166 BASIN YELLOWSTONE R178 LASSIE OF P A R 760 SHB BUCHWACKER 4101 S H B GRANDUER 2261	

CED	BW	WW	YW	MILK	CW	MARB	RE	FAT
10	0.2	49	86	27	23	0.72	0.42	0.039

\$W	\$F	\$G	\$B
53	58	51	109

A low birthweight, high CED, heifer friendly option in this bull.

**LOT 54 SHB RESILIENT 651** **ANGUS<sup>GS</sup>**  
 Birth Date: 01/12/23 AAA PENDING

SITZ RESILIENT 10208 AAA 19057457	MOHLEN SUBSTANTIAL 272 SITZ PRIDE 2008	BW AWW 664 RATIO 94 AYW 1222 RATIO 99
BJ'S BULLDOZER 627 SHB HEATHER LASS G470 AAA 19701551	SITZ TOP GAME 561X SITZ MISS BURGESS 4381 BJ'S BULLDOZER 418 BJ'S 171X ANNIE K 226 SHB PENDLETON 9201 SHB NEW TREND 8203	

CED	BW	WW	YW	MILK	CW	MARB	RE	FAT

\$W	\$F	\$G	\$B

Resilient back to the Canadian sire, BJ's Bulldozer. The Heather Lass cow family he's from traces back to the Van Dyke herd in Montana.

**LOT 49 SHB ACCOMPLISHMENT 461** **ANGUS<sup>GS</sup>**  
 Birth Date: 01/15/23 AAA 20867219

SITZ ACCOMPLISHMENT 12270 AAA 19660497	POSS ACHIEVEMENT SITZ BARBARA PERFECTION 218	BW 78 AWW 622 RATIO 88 AYW 1156 RATIO 93
SHB EVERELDA H500 AAA 20323608	4M ELEMENT 405 SITZ BARBARA PERFECTION 166 SILVEIRAS CONVERSION 8064 HICKORY HILL ERICA 009 CONNEALY COMMONWEALTH COLEMAN EVERELDA ENTENSE 981	

CED	BW	WW	YW	MILK	CW	MARB	RE	FAT
10	1.3	59	103	23	34	0.74	0.59	0.076

\$W	\$F	\$G	\$B
57	69	52	121

These Accomplishment sons reflect an emphasis on the foot quality and fertility this sire line is renowned for.

**LOT 51 SHB ACCOMPLISHMENT 911** **ANGUS<sup>GS</sup>**  
 Birth Date: 02/19/23 AAA 20867202

SITZ ACCOMPLISHMENT 12270 AAA 19660497	POSS ACHIEVEMENT SITZ BARBARA PERFECTION 218	BW 83 AWW 701 RATIO 99 AYW RATIO
V D A R HERO 7072 VDAR LUCY 6434 AAA 18409624	4M ELEMENT 405 SITZ BARBARA PERFECTION 166 DFA HERO 6017 V D A R HAZEL 0319 NICHOLS EXTRA K205 V D A R LUCY 4741	

CED	BW	WW	YW	MILK	CW	MARB	RE	FAT
8	1.5	68	114	23	33	0.39	0.40	0.034

\$W	\$F	\$G	\$B
62	65	35	100

A well-balanced, maternally oriented bull, with strong predictions for Heifer Pregnancy and for Maternal Calving ease. He should leave you with some useful females.

**LOT 53 SHB RESILIENT 521** **ANGUS<sup>GS</sup>**  
 Birth Date: 01/13/23 AAA PENDING

SITZ RESILIENT 10208 AAA 19057457	MOHLEN SUBSTANTIAL 272 SITZ PRIDE 2008	BW 78 AWW 606 RATIO 86 AYW 1241 RATIO 100
SHB RITA F438 AAA 19473016	SITZ TOP GAME 561X SITZ MISS BURGESS 4381 BALDRIDGE XPAND X743 BALDRIDGE ISABEL Y69 G K A F RITO 837 S-H-B MERGER 1140	

CED	BW	WW	YW	MILK	CW	MARB	RE	FAT

\$W	\$F	\$G	\$B

Sitz Resilient has become very popular in the Angus breed due to his consistent ability to sire high performance, solid cattle. Lot 53 is out of a Baldridge Colonel ET daughter of the 3136 donor who has been so influential for us. He ranks strongly for Calving Ease and Heifer Pregnancy.

**ANGUS<sup>GS</sup>**

ALL BULLS SELL GENOMICALLY TESTED WITH GE-EPDS.

An advanced high density genomic testing option available for Angus cattle powered by Neogen, fully endorsed by Angus Genetics, Inc. The first genomic test designed specifically for Angus cattle including potential markers for future trait selection.



# GARDINER PRIME ANGUS RANCH

Pat & Ada Gardiner  
6503 Farm to Market Road :: Bonners Ferry, ID 83805  
Pat 208-267-3194 :: Glenn 208-597-0617  
[www.gardinerprimeangus.com](http://www.gardinerprimeangus.com)

Hello and welcome to the Gardiner Prime Angus portion of the first annual SHB/GPAR sale! We are grateful to Ed and crew at SHB Angus for hosting this inaugural event and for our continuing partnership in advanced genetics breeding and proven performance Black Angus bulls. We are truly blessed to be living up here and to partner with SHB Angus in this sale.

While our bulls are bred independently, both of our programs share some basic common philosophies when it comes to breeding cattle. We both agree that cattle need to have growth performance enough to pay the bills and that they should not need any extra pampering to do so. Our GPAR offering this year is the result of 21+ years of careful genetic selection combined with real world performance and exceptional eye appeal. Our bulls excel in nearly all traits that will increase marbling grades, heavier weaning and overall balance.

Every year at bull sale time there's a lot said about reasons for optimism in the cattle market. This year, if you've got reasons to be looking at this catalog you already KNOW how strong the cattle market is! Over the years, we've purchased and bred some really good females, and have invested a lot of effort and money into learning what works and parting with what hasn't. Each individual in our herd has to do their job to keep their roster spot. We concentrate on using genetics that are progressive for performance and carcass traits while still emphasizing function and the real-world, practical traits that MUST be in place for cattle to be profitable.

One of the more recent tools available for the cattle breeder and what we are doing at GPAR has been the advent of genomic enhanced EPD's. Over the years this technology has earned the respect of cattlemen as those genetics get proven in the real world. This DNA testing validates the EPD's you see in our sale bulls and we have been very pleased to see that our hard work over these years has paid off. Through this advanced DNA testing, you can have confidence in the EPD's on these bulls.

We welcome you to visit us at the ranch and/or just call and talk cattle, it's our favorite subject! Looking forward to seeing you at the sale!

*Pat and Ada Gardiner*







WOODHILL COMSTOCK :: SIRE OF LOTS 55-61



LAR MAN IN BLACK :: SIRE OF LOTS 62-65



TEHAMA PATRIARCH F028 :: SIRE OF LOTS 66-72

REFERENCE

**D**

**WOODHILL COMSTOCK**

Birth Date: 8/21/2019

AAA 19674083

ANGUS<sup>GS</sup>

KM BROKEN BOW 002  
SPRING COVE RENO 4021  
AAA 17926446

SPRING COVE LIZA 021

CONNEALY CONFIDENCE PLUS  
CHERNE EVERGREEN D501-F348  
AAA 19218655

CHERNE EVERGREEN X353-D501

SUMMITCREST COMPLETE 1P55  
SUMMITCREST PRINCESS 0P12

C C A EMBLAZON 702  
SPRING COVE LIZA 721  
CONNEALY CONFIDENCE 0100  
ELBANNA OF CONANGA 1209

JMB TRACTION 292  
CHERNE EVERGREEN U351-X353

CED	BW	WW	YW	MILK	CW	MARB	RE	FAT
15	-2.4	63	113	45	33	1.35	0.97	-0.025

• Comstock offers tremendous calving-ease, breed leading Docility, and very strong improvement for the carcass traits, especially Marbling. When you enter his EPD's for those traits in the Sire Evaluation Search, there are no others that match him.  
• And the best part is, he combines all this in a stout, muscular physical package!  
• If you're concerned about cow maintenance costs, he will also reduce mature size in most cases.

\$W	\$F	\$G	\$B
83	75	96	171

REFERENCE

**E**

**LAR MAN IN BLACK**

Birth Date: 1/27/2020

AAA 19955191

ANGUS<sup>GS</sup>

CONNEALY BLACK GRANITE  
BAR R JET BLACK 5063  
AAA 18389838

BAR R IRIS ANITA 0113

SITZ TOP GAME 561X  
JMB MAXINE TG 2131  
AAA 17262346

JMB MAXINE DELUXE 9034

CONNEALY CONSENSUS 7229  
EURA ELGA OF CONANGA 9109

SITZ UPWARD 307R  
BAR R ANITA 7081  
GDAR GAME DAY 449  
SITZ PRIDE 88T

STEVENSON CE DELUXE 1914  
JMB MAXINE 720

CED	BW	WW	YW	MILK	CW	MARB	RE	FAT
9	2.5	92	164	20	87	1.12	0.82	0.076

• When you just want to "swing for the fences," there's Man In Black!  
• Huge growth, great carcass traits, and still keeps the foot quality that we feel is so important.  
• Becoming extremely sought after, with semen in high demand.  
• As you might expect with those levels of growth, he will sire a bit more frame as well.

\$W	\$F	\$G	\$B
69	134	74	209

REFERENCE

**F**

**TEHAMA PATRIARCH F028**

Birth Date: 2/13/2017

AAA 18981191

ANGUS<sup>GS</sup>

HOOVER DAM  
S S NIAGARA Z29  
AAA 17287387

JET S S X144

CONNEALY THUNDER  
TEHAMA ELITE BLACKBIRD D826  
AAA 18317128

TEHAMA ELITE BLACKBIRD Z630

SYDGEN C C & 7  
ERICA OF ELLSTON C124

B/R NEW DAY 454  
JET S S T151  
BALDRIDGE KABOOM K243 KCF  
PARKA OF CONANGA 241

MCC DAYBREAK  
TEHAMA ELITE BLACKBIRD T766

CED	BW	WW	YW	MILK	CW	MARB	RE	FAT
14	-1.8	66	131	30	49	0.84	0.80	0.019

• ABS Global's top semen sales sire for the last two years and as popular as ever!  
• With thousands of progeny on record, he excels from "start to finish," combining calving ease, growth, foot quality, fertility, and carcass improvement in cattle that are attractive in their physical makeup.  
• His daughters are making a name for him as well, and he represents multiple generations of sires well proven to improve udder and teat quality.

\$W	\$F	\$G	\$B
73	97	64	161



LOT  
**55**

## GPAR COMSTOCK L68

Birth Date: 1/22/2023

AAA 20676262

ANGUS **CS**



WOODHILL  
COMSTOCK

AAA 19674083

SPRING COVE RENO 4021

CHERNE EVERGREEN D501-F348

SITZ STELLAR 726D

GPAR LADY JET J102

AAA 20259161

GPAR LADY JET G19

KM BROKEN BOW 002

SPRING COVE LIZA 021

CONNEALY CONFIDENCE PLUS  
CHERNE EVERGREEN X353-D501

MOHNNEN SUBSTANTIAL 272

SITZ PRIDE 200B

3F EPIC 4631

GPAR LADY JET W22

BW	81
AWW	791
RATIO	119
AYW	1277
RATIO	113

CED	BW	WW	YW	MILK	CW	MARB	RE	FAT
2	2.3	95	160	29	62	0.66	0.92	0.008

\$W	\$F	\$G	\$B
89	89	57	147

Complete, top shelf herdsire prospect here, from front to back. Don't miss him! By far the highest adjusted weaning weight bull this year as his dam's first calf, with a 119 NR, and she's a beauty. His individual performance, DNA genomic work, and his EPDs all point to a full on powerhouse growth bull. He won't disappoint when you visually appraise him either!



LOT 55

LOT  
**56**

## GPAR COMSTOCK L69

Birth Date: 1/22/2023

AAA 20676251

ANGUS **CS**



WOODHILL  
COMSTOCK

AAA 19674083

SPRING COVE RENO 4021

CHERNE EVERGREEN D501-F348

GPAR D614 COMRADE F138

GPAR BLACKLASS J135

AAA 20259926

GPAR BLACKLASS G2

KM BROKEN BOW 002

SPRING COVE LIZA 021

CONNEALY CONFIDENCE PLUS  
CHERNE EVERGREEN X353-D501

GPAR COMRADE D614

GPAR GM BLACKLASS U70

3F EPIC 4631

GPAR BLACKLASS C53

BW	70
AWW	709
RATIO	107
AYW	1098
RATIO	98

CED	BW	WW	YW	MILK	CW	MARB	RE	FAT
12	-1.5	64	120	40	47	1.21	1.03	-0.023

\$W	\$F	\$G	\$B
79	88	90	178

Another solid prospect excelling for nearly all the traits that matter, with one of our heaviest weaning weights turned in as well. Super cow-maker prospect here, with very high percentile rankings for the \$M and \$W values, at 2% and 10%, respectively. And once again, these Comstock sons will really increase marbling grades in a set of cattle! Heifer bull

LOT  
**57**

## GPAR COMSTOCK L51

Birth Date: 1/12/2023

AAA 20676032

ANGUS **CS**



WOODHILL  
COMSTOCK

AAA 19674083

SPRING COVE RENO 4021

CHERNE EVERGREEN D501-F348

SYDGEN SUPERCOOL 7005

GPAR LASS J127

AAA 20259170

GPAR LASS C35

KM BROKEN BOW 002

SPRING COVE LIZA 021

CONNEALY CONFIDENCE PLUS  
CHERNE EVERGREEN X353-D501

CONNEALY COOL 39L

SYDGEN FOREVER LADY 3657

SITZ GAME TIME 11741

GPAR LASS A65

BW	68
AWW	692
RATIO	104
AYW	1193
RATIO	106

CED	BW	WW	YW	MILK	CW	MARB	RE	FAT
14	-1.9	64	110	40	42	0.97	0.92	-0.040

\$W	\$F	\$G	\$B
80	76	77	154

A lot of good here and not just a one-time fluke, he's bred many generations deep to make easy calving, productive, quiet cattle that excel from start to finish. Combine those traits with his predictions for Heifer Pregnancy and for moderation of mature size in his daughters, and you get rankings of top 1% of the breed for \$Maternal and top 4% for \$Weaning indexes! Heifer bull

LOT  
**58**

## GPAR COMSTOCK L79

Birth Date: 2/6/2023

AAA 20676276

ANGUS **CS**



WOODHILL  
COMSTOCK

AAA 19674083

SPRING COVE RENO 4021

CHERNE EVERGREEN D501-F348

BASIN PAYWEIGHT 1682

RATHBUN GLORIA E600

AAA 19298867

RATHBUN GLORIA Z568

KM BROKEN BOW 002

SPRING COVE LIZA 021

CONNEALY CONFIDENCE PLUS  
CHERNE EVERGREEN X353-D501

BASIN PAYWEIGHT 0065

21AR 0 LASS 7017

MOHNNEN DYNAMITE 1356

RATHBUN GLORIA W912

BW	70
AWW	663
RATIO	100
AYW	1130
RATIO	101

CED	BW	WW	YW	MILK	CW	MARB	RE	FAT
13	-2.6	68	119	31	50	1.07	0.65	0.053

\$W	\$F	\$G	\$B
75	90	71	161

Excellent low birthweight prospect, solid growth, super high Heifer Pregnancy, and great carcass quality bred in as well. The udder quality on his powerful 1682 dam is impressive. Heifer bull







LOT 59

LOT  
**59**

## GPAR COMSTOCK L72

Birth Date: 1/25/2023

AAA 20676291

ANGUS 35

WOODHILL  
COMSTOCK  
AAA 19674083

SPRING COVE RENO 4021

COMSTOCK

CHERNE EVERGREEN D501-F348

RAVEN POWERBALL 53

SITZ BLACKBIRD 125C

AAA 18077504

SITZ BLACKBIRD 129Z

KM BROKEN BOW 002

SPRING COVE LIZA 021

CONNEALY CONFIDENCE PLUS

CHERNE EVERGREEN X353-D501

PA POWER TOOL 9108

RAVEN EMMA E 4241

SITZ UPWARD 307R

SITZ BLACKBIRD 177W

BW	79
AWW	640
RATIO	97
AYW	1118
RATIO	100

CED	BW	WW	YW	MILK	CW	MARB	RE	FAT
12	-1.5	67	119	42	49	0.94	1.00	-0.020

This will be one of those bulls that will catch your eye on sale day, with his clean, attractive profile and his expressively muscled hip. His dam earned Pathfinder status in the renowned Sitz Angus program, and she has proven her producing ability here as well. EPDs say he is going to be a very good calving-ease bull with solid growth, and true to his maternal heritage he's high for Heifer Pregnancy and for Scrotal. He ranks very high for \$M and \$W also, in the top 2% for both indexes! Heifer bull

\$W	\$F	\$G	\$B
84	89	75	164

LOT  
**60**

## GPAR COMSTOCK L50

Birth Date: 1/11/2023

AAA 20676264

ANGUS 35

WOODHILL  
COMSTOCK  
AAA 19674083

SPRING COVE RENO 4021

COMSTOCK

CHERNE EVERGREEN D501-F348

SITZ STELLAR 726D

GPAR CAMILLA J100

AAA 20259160

GPAR CAMILLA G9

KM BROKEN BOW 002

SPRING COVE LIZA 021

CONNEALY CONFIDENCE PLUS

CHERNE EVERGREEN X353-D501

MOHNEN SUBSTANTIAL 272

SITZ PRIDE 2008

3F EPIC 4631

CAMAS PRAIRIE CAMILLA 4524

BW	57
AWW	629
RATIO	95
AYW	1010
RATIO	90

CED	BW	WW	YW	MILK	CW	MARB	RE	FAT
17	-4.0	60	115	41	32	1.08	0.61	0.020

If you want easily born calves, if you want docile, good-footed, high producing females, if you want them not too big at maturity, you want some of these Comstock sons. This one will do those things as well as any, and having Stellar as his maternal grandsire only strengthens the foot and udder quality built into his pedigree. Super low Birth, super high Marbling, from a beautiful, moderate dam with an immaculate udder. Heifer bull

\$W	\$F	\$G	\$B
76	71	74	145



LOT 62

LOT  
**61**

## GPAR COMSTOCK L81

Birth Date: 2/13/2023

AAA 20676252

ANGUS 35

WOODHILL  
COMSTOCK  
AAA 19674083

SPRING COVE RENO 4021

COMSTOCK

CHERNE EVERGREEN D501-F348

BALDRIDGE COMMAND C036

GPAR BARBARA J131

AAA 20259172

GPAR BARBARA D611

KM BROKEN BOW 002

SPRING COVE LIZA 021

CONNEALY CONFIDENCE PLUS

CHERNE EVERGREEN X353-D501

EF COMMANDO 1366

BALDRIDGE BLACKBIRD A030

CONNEALY CAPITALIST 028

GPAR BARBARA Y111

BW	51
AWW	589
RATIO	89
AYW	1005
RATIO	90

CED	BW	WW	YW	MILK	CW	MARB	RE	FAT
12	-0.9	67	109	28	32	1.49	0.89	-0.021

Excellent calving ease, solid growth, reduced mature size. He is almost impossible to match in his Marbling EPD. If you retain ownership on fed cattle and need to boost levels of Choice and Prime, here's your bull! Heifer bull

\$W	\$F	\$G	\$B
76	63	102	165

LOT  
**62**

## GPAR MAN IN BLACK L76

Birth Date: 2/1/2023

AAA 20676181

ANGUS 35

LAR MAN IN BLACK  
AAA 19955191

BAR R JET BLACK 5063

JMB MAXINE TG 2131

S A V BIRTHSTONE 8258

GPAR LASS A65

AAA 17568703

GPAR BLACKLASS 80X

CONNEALY BLACK GRANITE

BAR R IRIS ANITA 0113

SITZ TOP GAME 561X

JMB MAXINE DELUXE 9034

S A V BISMARCK 5682

S A V EMBLYNETTE 4408

SITZ RLS UPWARD 7498

G A R 616 RITO 1925

BW	73
AWW	726
RATIO	110
AYW	1182
RATIO	105

CED	BW	WW	YW	MILK	CW	MARB	RE	FAT
8	0.2	70	119	20	48	0.84	0.54	0.047

Here's an opportunity to obtain a son of the A65 female, we've had a lot of great cows but she ranks near the top all-time for our program. She would be the prototype for how we like them: deep, quiet, fertile, sound and super productive. She has weaned 8 calves at 107 NR. This bull is typical of her progeny, with his stoutness, power, and performance, posting a 110 weaning ratio. Help yourself to a great herd bull prospect! Heifer bull

\$W	\$F	\$G	\$B
63	86	58	144



## LOT 63 GPAR MAN IN BLACK L63

Birth Date: 1/18/2023

AAA 20676151

ANGUS<sup>GS</sup>

LAR MAN IN BLACK

AAA 19955191

BAR R JET BLACK 5063

JMB MAXINE TG 2131

SYDGEN SUPERCOOL 7005

GPAR ERICA G35

AAA 19587544

GPAR ERICA Z14

CONNEALY BLACK GRANITE

BAR R IRIS ANITA 0113

SITZ TOP GAME 561X

JMB MAXINE DELUXE 9034

CONNEALY COOL 39L

SYDGEN FOREVER LADY 3657

BASIN YELLOWSTONE R178

GPAR ERICA U93

BW	74
AWW	696
RATIO	105
AYW	1146
RATIO	102

CED	BW	WW	YW	MILK	CW	MARB	RE	FAT
11	1.1	80	135	20	50	0.71	0.32	0.065

Very eye-appealing, masculine powerhouse here; performed as expected yet still offers solid calving-ease credentials. Stems from the treasured Erica line of females started from a purchase from Thomas Angus many years ago. Heifer bull

\$W	\$F	\$G	\$B
71	88	47	135



LOT 63

## LOT 64 GPAR MAN IN BLACK L64

Birth Date: 1/18/2023

AAA 20676053

ANGUS<sup>GS</sup>

LAR MAN IN BLACK

AAA 19955191

BAR R JET BLACK 5063

JMB MAXINE TG 2131

BALDRIDGE COMMAND C036

GPAR ELLUNA H66

AAA 19878336

GPAR ELLUNA E85

CONNEALY BLACK GRANITE

BAR R IRIS ANITA 0113

SITZ TOP GAME 561X

JMB MAXINE DELUXE 9034

EF COMMANDO T366

BALDRIDGE BLACKBIRD A030

CONNEALY REGULATOR

GPAR ELLUNA Z6

BW	70
AWW	622
RATIO	94
AYW	1164
RATIO	104

CED	BW	WW	YW	MILK	CW	MARB	RE	FAT
10	1.4	88	153	28	73	0.99	1.04	0.022

Powerhouse growth EPDs, with excellent carcass traits as well. Yet his overall balance allows rankings near the top of the breed for the maternal indexes, at 10% for \$Maternal and 1% for \$Weaning. Stems back to the highly productive SHB Elluna tribe. Heifer bull

\$W	\$F	\$G	\$B
86	110	75	185

## LOT 65 GPAR MAN IN BLACK L61

Birth Date: 1/17/2023

AAA 20676051

ANGUS<sup>GS</sup>

LAR MAN IN BLACK

AAA 19955191

BAR R JET BLACK 5063

JMB MAXINE TG 2131

TEHAMA TAHOE B767

GPAR ERICA H68

AAA 19878912

GPAR ERICA Z14

CONNEALY BLACK GRANITE

BAR R IRIS ANITA 0113

SITZ TOP GAME 561X

JMB MAXINE DELUXE 9034

TEHAMA UPWARD Y238

TEHAMA MARY BLACKBIRD Y684

BASIN YELLOWSTONE R178

GPAR ERICA U93

BW	75
AWW	703
RATIO	106
AYW	1133
RATIO	101

CED	BW	WW	YW	MILK	CW	MARB	RE	FAT
9	1.7	76	123	29	46	1.09	0.51	0.040

His EPDs for Heifer Pregnancy, foot quality and reduced mature cow size push him into the top of the breed for \$Maternal and \$Weaning, at 1% and 4%, respectively. Add in his high growth and exceptional carcass numbers and he's a very intriguing prospect! Heifer bull

\$W	\$F	\$G	\$B
80	82	71	153

## LOT 66 GPAR PATRIARCH L74

Birth Date: 1/29/2023

AAA 20676305

ANGUS<sup>GS</sup>

TEHAMA PATRIARCH F028

AAA 18981191

S S NIAGARA Z29

TEHAMA ELITE BLACKBIRD D826

G A R SURE FIRE

G A R SURE FIRE 87

AAA 18943545

G A R SUNRISE L365

HOOVER DAM

JET S S X144

CONNEALY THUNDER

TEHAMA ELITE BLACKBIRD Z630

CONNEALY IN SURE 8524

CHAIR ROCK 5050 G A R 8086

G A R SUNRISE

G A R COMPLETE 1481

BW	85
AWW	678
RATIO	102
AYW	1187
RATIO	105

CED	BW	WW	YW	MILK	CW	MARB	RE	FAT
11	1.6	78	143	34	73	0.99	1.22	-0.020

Big birth to growth spread on this heavy weaning Patriarch – seems like we've said that once or twice! Super carcass traits on this one, add it all up and it's easy to see how he reaches his top 5% of the breed ranking for the all-inclusive \$Combined Index! Heifer bull

\$W	\$F	\$G	\$B
77	114	81	195

## LOT 67 GPAR PATRIARCH L77

Birth Date: 2/3/2023

AAA 20676290

ANGUS<sup>GS</sup>

TEHAMA PATRIARCH F028

AAA 18981191

S S NIAGARA Z29

JET S S X144

TEHAMA ELITE BLACKBIRD D826

G A R SURE FIRE

G A R SURE FIRE N1457

AAA 19083950

G A R TRUST 13

HOOVER DAM

JET S S X144

CONNEALY THUNDER

TEHAMA ELITE BLACKBIRD Z630

CONNEALY IN SURE 8524

CHAIR ROCK 5050 G A R 8086

SYDGEN TRUST 6228

G A R 28 AMBUSH 1749

BW	70
AWW	697
RATIO	105
AYW	1177
RATIO	105

CED	BW	WW	YW	MILK	CW	MARB	RE	FAT
12	-0.9	66	123	29	50	1.03	0.53	0.023

Let's see...low birth, solid growth, great carcass, high for fertility – these footnotes all start to sound alike. Patriarch just does a lot of things well, the Heifer Pregnancy trait is one we value. Heifer bull

\$W	\$F	\$G	\$B
70	92	70	162



## LOT 68 GPAR PATRIARCH L59

Birth Date: 1/16/2023 AAA 20676299

ANGUS GS



SS NIAGARA Z29  
TEHAMA PATRIARCH F028  
AAA 18981191

TEHAMA ELITE BLACKBIRD D826

G A R SUNRISE  
G A R SUNRISE 1837  
AAA 18977795

CHAIR ROCK SURE FIRE 4050  
CHAIR ROCK AMBUSH 1018

BW	79
AWW	715
RATIO	108
AYW	1185
RATIO	106

CED	BW	WW	YW	MILK	CW	MARB	RE	FAT
10	-0.4	82	150	33	53	1.24	0.70	-0.007

\$W	\$F	\$G	\$B
80	80	85	166

A tremendous "spread" bull, combining excellent calving-ease with top of the breed growth EPDs, and as an individual he turned in one of our heaviest weaning weights as well. He's also extremely high for Marbling, and we really like his full sister in our bred heifer pen. Heifer bull



LOT 70

## LOT 71 GPAR PATRIARCH L83

Birth Date: 2/19/2023 AAA 20676218

ANGUS GS



SS NIAGARA Z29  
TEHAMA PATRIARCH F028  
AAA 18981191

TEHAMA ELITE BLACKBIRD D826

SITZ RESILIENT 10208  
SITZ JLS LASS 36J  
AAA 20012764

SITZ JLS LASS 99G

BW	65
AWW	646
RATIO	97
AYW	1100
RATIO	98

CED	BW	WW	YW	MILK	CW	MARB	RE	FAT
9	-1.0	80	138	38	58	0.79	0.93	0.018

\$W	\$F	\$G	\$B
90	96	63	160

We acquired this bull's dam as a weaned heifer in the 2021 Female Sale at Sitz Angus. She was the heaviest weaning weight heifer of her entire calf crop, and this is her first calf. He posts an amazing suite of EPDs, with excellent growth, high maternal values, and solid end-product merit. Heifer bull

The sire of this bull is one of the thickest, stoutest, most docile Sitz Stellar sons "in captivity," as the saying goes, and this calf is certainly a chip off the ol' block in that regard! We sold the sire, GPAR Stellar H73, to Jeff Schmidt at JR Ranch as a yearling, but due to an injury we kept him at home. We eventually used H73 for two breeding seasons, and in a relatively small progeny sample we've been really impressed. Add in the fact that Lot 73's dam has always brought in the good ones, and there's plenty of reasons to look him up! His numbers show him to be a moderate birth, high growth prospect.

## LOT 69 GPAR PATRIARCH L75

Birth Date: 1/31/2023 AAA 20676237

ANGUS GS



SS NIAGARA Z29  
TEHAMA PATRIARCH F028  
AAA 18981191

TEHAMA ELITE BLACKBIRD D826

3F EPIC 4631  
GPAR BLACKBIRD G11  
AAA 19587526

TW ELA BLACKBIRD 509Y

BW	82
AWW	674
RATIO	102
AYW	1087
RATIO	97

CED	BW	WW	YW	MILK	CW	MARB	RE	FAT
11	-0.3	67	125	29	38	1.11	0.69	0.050

\$W	\$F	\$G	\$B
70	73	74	147

For overall balance, this bull will be hard to fault, with his low birthweight, strong growth, high fertility, and high carcass quality EPDs. We really like his perfect uddered, calm, deep-bodied young dam. Heifer bull

## LOT 70 GPAR PATRIARCH L58

Birth Date: 1/15/2023 AAA 20676090

ANGUS GS



SS NIAGARA Z29  
TEHAMA PATRIARCH F028  
AAA 18981191

TEHAMA ELITE BLACKBIRD D826

3F EPIC 4631  
GPAR RITA J141  
AAA 20295239

G A R PROPHET 1734  
G A R PROPHET  
G A R PREDESTINED 1869

BW	72
AWW	703
RATIO	106
AYW	1218
RATIO	108

CED	BW	WW	YW	MILK	CW	MARB	RE	FAT
14	-2.8	79	146	28	57	0.97	0.57	0.064

\$W	\$F	\$G	\$B
79	91	64	155

Massive birth to growth spread on this heavy weaning calf. His young dam is off to a great start. Heifer bull

## LOT 72 GPAR PATRIARCH L82

Birth Date: 2/14/2023 AAA 20676322

ANGUS GS

SS NIAGARA Z29  
TEHAMA PATRIARCH F028  
AAA 18981191

TEHAMA ELITE BLACKBIRD D826

CONNEALY CAPITALIST 028  
GPAR PRIDE D602  
AAA 18505594

GPAR PRIDE Z40

BW	70
AWW	636
RATIO	96
AYW	1111
RATIO	99

CED	BW	WW	YW	MILK	CW	MARB	RE	FAT
12	0.6	75	137	30	49	0.45	0.72	-0.001

\$W	\$F	\$G	\$B
72	84	45	128

These Patriarch sons just put together a lot of good things: combining low birth, strong growth, plus high fertility, and this one has great carcass numbers as well. Deep-bodied, powerful Capitalist dam. Heifer bull

## LOT 73 GPAR H73 STELLAR L88

Birth Date: 2/27/2023 AAA 20624498

ANGUS GS

SITZ STELLAR Z26D  
GPAR STELLAR H73  
AAA 19822871

GPAR ERICA PRIDE E66

CONNEALY REGULATOR  
GPAR ELLUNA E85  
AAA 18808851

GPAR ELLUNA Z6

MOHNEN SUBSTANTIAL 272  
SITZ PRIDE 2008  
SITZ GAME TIME 11741  
ERICA PRIDE OF PAR 340  
CONNEALY CAVALRY 1149  
BLACK CAYRA OF CONANGA 8127  
S A V FINAL ANSWER 0035  
SHB RIGHT TIME 4196

BW	85
AWW	707
RATIO	107
AYW	1141
RATIO	102

CED	BW	WW	YW	MILK	CW	MARB	RE	FAT
7	2.1	79	128	18	53	0.57	0.94	0.008

\$W	\$F	\$G	\$B
63	97	53	150



# BALDRIDGE WORKING CLASS

The Calving-Ease Bull Designed For your Working Class Cow Herd



AAA 20420686  
Semen \$35  
Certificates \$40  
Volume Discount Eligible



Cherry  
Crk Blue  
Collar  
G275

Sire of Baldridge Working Class



EPDs as of 02/02/24

ORigen

I\*Tehama Patriarch F028  
+\*Cherry Crk Blue Collar G275  
19800734 I\*Cherry Crk Envita B211 S

#\*S S Niagara Z29  
Tehama Elite Blackbird D826  
#\*\*KM Broken Bow 002  
+\*Cherry Crk Envita 1042 S

I\*Hoover No Doubt  
+\*Baldridge Isabel H413  
19788611 I\*+Baldridge Isabel B061

#\*Mogck Bullseye  
\*Miss Blackcap Ellston J2  
#\*\*G A R Prophet  
\*Baldridge Isabel Y69

CW	+48	55%
MARB	1.24	10%
RE	1.08	5%
FAT	+0.16	55%
\$AxH	+179	10%
\$AxJ	+169	15%

CED	BW	WW	YW	YH	SC	HP	CEM	Milk	MH
+14	-2.6	+69	+124	+3	+.81	+18.7	+11	+31	+.4
4%	2%	35%	30%	75%	55%	3%	25%	20%	50%
Doc	Claw	Angle	PAP	HS	\$M	\$W	\$G	\$B	\$C
+23	+.51	+.44	+.72	+.44	+.83	+.75	+.88	+168	+301
30%	55%	30%	40%	40%	10%	15%	10%	25%	15%

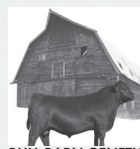
Multi-trait balance & superiority is one of the main characteristics that separates "Working Class" from the pack and enabled him to be the \$70,000 top-selling bull in the 2024 Baldridge Performance Angus Bull Sale.

"Working Class" offers slam dunk heifer-safe calving ease, solid performance, strong heifer pregnancy, \$ Maternal and ranks well for PAP, docility and end product excellence with great phenotype.

Individual Performance: BW 68 lbs, BWR 96, 205 wt: 665 lbs, WWR 105, 365 wt: 1214 lbs, YWR 107 with 127 contemporaries. Adj. IMF 6.26, Ratio 117; Adj REA 14.5, Ratio 118; Adj Rib Fat 0.33, Ratio 138, 18-month scrotal measurement of 40.0 cm.

His dam has joined the Baldridge embryo program and is a full sister to the high-capacity sire, Baldridge Pappy, and a maternal sister to the balanced trait, strong phenotype sire, Baldridge Gibson, at Select Sires. The foundation 3rd dam, "Y69", is the most influential cow in Baldridge history and is having a huge impact on the nation's cow herds.

CSS semen is being collected at ORigen, Huntley, MT, 866-867-4436. For semen, contact Eldon Starr, Bull Barn Genetics: 800-535-6173.



Baldridge  
Pappy

Full Brother to the Dam of "Working Class"



Cherry  
Crk Envita  
B211

Dam of Cherry Crk Blue Collar G275



Baldridge  
Isabel  
Y69

Great grandam of "Working Class"

OWNERS



Chas & Misty Wheeler  
Paris, MO, 573-473-2508  
mistywheeler4@yahoo.com



Clint & Adana Stevenson  
Hobson, MT, 406-366-9023  
stevensondot@yahoo.com



Jud & Denise Baldridge  
North Platte, NE, 308-520-2221  
jud@baldridge.net



Eldon & Kathy Starr  
Stapleton, NE, 308-530-0825  
bullbarn@bullbarn.com

BONNIE ACRES FARM GW Genetics

Al & Jeanne Conover  
Baxter, IA, 515-491-8078  
conover@conoverauction.com

Gary Wall  
Jolley, IA, 406-208-8536  
Gary.wall1974@gmail.com

SHB ANGUS

Ed Gross, Spokane Hutterian Brethren  
Reardon, WA, 509-979-9233  
shbangus@gmail.com

DIAMOND PEAK CATTLE CO.

John Raftopoulos  
Craig, CO, 970-824-5750  
johnrafto@gmail.com



SHB ANGUS  
3610 N WOOD RD  
REARDAN, WA 99029



ALWAYS THE SAME GREAT QUALITY & CUSTOMER SERVICE!



**SHB ANGUS**  
ED GROSS, MANAGER  
REARDAN, WASHINGTON  
ED'S CELL: 509 979-9233  
ELI'S CELL 509-434 6244  
SHBANGUS@GMAIL.COM  
WWW.SHBANGUSCATTLE.COM



**GARDINER PRIME ANGUS RANCH**  
PAT & ADA GARDINER  
BONNERS FERRY, IDAHO  
PAT'S CELL: 208-290-4522  
GLENN ENSZ, HERDSMAN: 208-597-0617  
PGARDINER@AOL.COM  
WWW.GARDINERPRIMEANGUS.COM